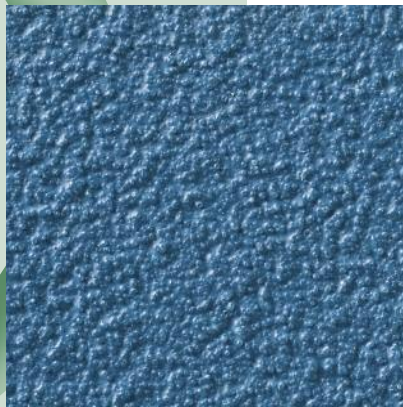
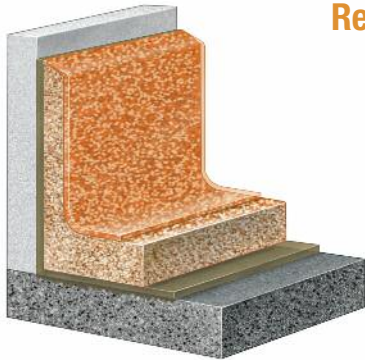


COMMERCIAL • INDUSTRIAL • INSTITUTIONAL

SEAMLESS FLOOR & WALL SYSTEMS



DUR-A-FLEX
INNOVATION FROM THE FLOOR UP



Resurfacers



Clear or pigmented epoxy, acrylic or urethane binders fuse with multi-colored or natural quartz aggregate to create a monolithic matrix layer with high tensile strength and superior longevity.

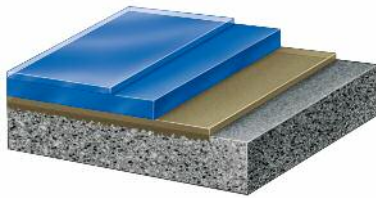
This heavy duty resurfacer restores spalled or eroded concrete in the most demanding abrasive wear environments. Available in standard slip resistant, orange peel and smooth textures.

Physical Property	Test Method	Epoxies			Urethanes	
		DUR-A-GARD SL Nominal 1/8"	SHOP FLOOR DUR-A-QUARTZ Nominal 1/8"	DUR-A-CHIP Nominal 1/8"	POLY-CRETE HF# Nominal 1/4"	POLY-CRETE MDB*** Nominal 1/4"
Hardness (Shore D)	ASTM D-2240	70-80	75-80	75-80	85	85
Compressive Strength	ASTM D-695	16,000 psi	17,500 psi	16,000 psi	NA	NA
	ASTM C-579	10,500 psi	12,500 psi	10,500 psi	8,500 psi	8,990 psi
Tensile Strength	ASTM D-638	3,000 psi	4,000 psi	3,700 psi	NA	2,175 psi
	ASTM C-307	1,950 psi	2,600 psi	1,800 psi	1,000 psi	1,000 psi
Tensile Elongation	ASTM D-638	7.50%	7.50%	7.50%	4.50%	4.50%
Flexural Strength	ASTM D-790	4,000 psi	6,250 psi	4,700 psi	NA	5,075 psi
	ASTM C-580	2,900 psi	4,500 psi	3,900 psi	2,300 psi	2,400 psi
Flexural Modulus of Elasticity	ASTM D-790	5.5 x 10 ⁵	6.2 x 10 ⁵	5.0 x 10 ⁵	1.7 x 10 ⁵	2.0 x 10 ⁵
Linear Shrinkage	ASTM D-2566	0.02%	0.02%	0.02%	0.04%	0.06%
Linear Expansion	ASTM C-531	2 x 10 ⁻⁵	2 x 10 ⁻⁵	2 x 10 ⁻⁵	2 x 10 ⁻⁵	2 x 10 ⁻⁵
Bond Strength to Concrete	ASTM D-4541	400 psi substrate fails	400 psi substrate fails	400 psi substrate fails	400 psi substrate fails	400 psi substrate fails
Indentation	ML D-3134	.025 MAX	.025 MAX	.025 MAX	Pass	Pass
Impact Resistance	ML D-3134	Pass	Pass	Pass	Pass	Pass
Water Absorption	ASTM D-570	0.04%	0.04%	0.04%	0.04%	0.04%
Heat Resistance Limitation		140°F to 200°F	140°F to 200°F	140°F to 200°F	-100°F to 220°F	-100°F to 220°F
Flammability	ASTM D-635	Self Extinguishing	Self Extinguishing	Self Extinguishing	Self Extinguishing	Self Extinguishing
Flame Spread/NFPA 101	ASTM E-84	Class A	Class B	Class A	Class B	Class C
Abrasion Resistance	ASTM C-501					
CS17 Wheel 1000 GM Load 1000 Cycles		35 mg loss	24 mg loss	24 mg loss	50 mg loss	50 mg loss
Coefficient of Friction	ASTM D-2047					
Standard Slip Resistant		NA	0.9	0.8	0.9	0.9
Orange Peel		0.8	0.8	NA	NA	NA
Smooth		0.7	0.7	0.7	NA	NA
VOC Content		3.5 g/L	8.0 g/L (SF) 0 g/L (DAQ)	0 g/L	0 g/L	0 g/L



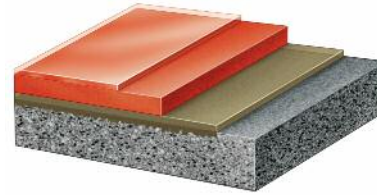
FLOORING SYSTEMS

Performance Topcoats



The perfect finish for epoxy or methyl methacrylate flooring systems, a performance topcoat makes your floors more chemical and abrasion resistant while imparting a high gloss, low glare satin or flat finish.

Coatings/Floor & Wall



Quality coatings are the key components in any flooring system. High strength, abrasion resistant epoxy or acrylic coatings can be further enhanced with antimicrobial treatment, chemical and heat resistant Novolac and other special formulations.

Hybrids		Accelera®		Methyl Methacrylates (MMA)		
HYBRI-FLEX MQ# HYBRI-FLEX MB# Nominal 1/4"	HYBRI-FLEX EQ# HYBRI-FLEX EB# Nominal 1/4"	ACCELERA HB, HC, HQ ACCELERA B, Q Nominal 1/4"	ACCELERA C Nominal 1/4"	CRYL-A-STAIN# CRYL-A-SHIELD# 30-45 MILS	CRYL-A-FLOOR** CRYL-A-QUARTZ** 1/8"-1/4"	CRYL-A-CHIP# CRYL-A-CHIP SL# 1/16"-1/4"
88-92 (C-109) 8,300 psi	75-80 17,500 psi	70	70	88-92 (C-109) 6,000 psi	88-92 (C-109) 8,300 psi	88-92 (C-109) 6,000 psi
2,000 psi	12,500 psi	18,000 psi	18,000 psi			
1,350 psi	4,000 psi	2,600 psi	2,600 psi	3,555 psi	2,000 psi	3,555 psi
7.50%	2,600 psi			2,400 psi	1,350 psi	1,350 psi
3,700 psi	7.50%	63%	63%	7.50%	7.50%	7.50%
2,700 psi	6,250 psi			3,500 psi	3,700 psi	3,700 psi
4.7 x 10 ⁻⁵	4,500 psi			2,500 psi	2,700 psi	2,700 psi
0.02%	6.2 x 10 ⁻⁵			4.5 x 10 ⁻⁵	4.7 x 10 ⁻⁵	4.7 x 10 ⁻⁵
3.5 x 10 ⁻⁵	0.03%			0.02%	0.02%	0.02%
400 psi substrate fails	2 x 10 ⁻⁵			3.5 x 10 ⁻⁵	3.5 x 10 ⁻⁵	3.5 x 10 ⁻⁵
.025 MAX	400 psi substrate fails	400 psi substrate fails	400 psi substrate fails	400 psi substrate fails	400 psi substrate fails	400 psi substrate fails
Pass	.025 MAX	Pass	Pass	.032 MAX	.025 MAX	.030 MAX
0.04%	Pass	Pass	Pass	Pass	Pass	Pass
140°F to 160°F	0.04%	0.08%	0.08%	0.04%	0.04%	0.04%
Self Extinguishing	140°F to 200°F	140°F to 200°F	140°F to 200°F	140°F to 160°F	140°F to 160°F	140°F to 160°F
	Self Extinguishing			Self Extinguishing	Self Extinguishing	Self Extinguishing
	Class A			Class C	Class C	Class C
21 mg loss						
0.7	24 mg loss	27 mg loss	27 mg loss	29 mg loss	21 mg loss	29 mg loss
NA						
0.5	0.8	0.8	0.6	NA	0.7	0.8
<5 g/L (Base Coat) 74 g/L (Armor Top), 340 g/L (Poly 2HS)	0.7			NA	NA	NA
	<5 g/L (Base Coat) 74 g/L (Armor Top), 340 g/L (Poly 2HS)	0 g/L	0 g/L	0.5	0.5	0.7
				80-90 g/L	80-90 g/L	80-90 g/L

Contributes to LEED®

*Also available in SL formulation

** Available in MD and TC formulations

DUR-A-FLEX – Heavy Duty Epoxies



Membranes & Crack Fillers

Elast-O-Coat Waterproof Membrane

This two part, 100% solids, elastomer modified epoxy can be used with or without a primer coat to form a waterproof layer that also protects overlying layers from stress and crack transmission, while helping to dampen vibration. Elast-O-Coat conforms to virtually any shape or contour.

Dur-A-Glaze Flex Resin

A seamless, fluid-applied, waterproof membrane for a quick turn around time or when a surface cannot be dried thoroughly. It can also be used as a crack and joint filler.

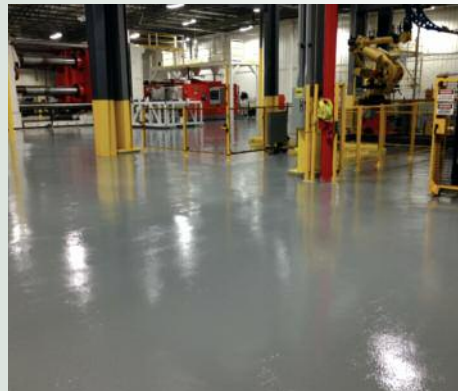
Applications: Shower Rooms, Washrooms, Medical Research Labs, Drum Storage Areas, Secondary Containment, Mechanical Rooms, Potable Water Storage, Animal Housing Areas, Cagewash Areas and Wet Processing Areas.

Resurfacers

Dur-A-Flex flooring systems for decorative and industrial applications, available with various degrees of slip resistance and performance enhancing features.

Shop Floor

Natural quartz aggregate and pigmented Dur-A-Glaze Shop Floor epoxy make this the affordable industrial resurfacer. An opaque, monolithic surface hides imperfections and stands up to abuse.



Primers & Sealers

A penetrating, low viscosity prime coat is the ideal surface preparation for the full range of flooring systems and resurfacers because it seals and protects substrates, while creating a uniform bonding surface.

Dur-A-Shield II

Consisting of a solvent-based epoxy prime coat and a finish coat, Dur-A-Shield creates a high strength surface that is high gloss, easy to clean and resistant to abrasion, oil, gasoline, acids and solvents.

Applications: Warehouses, Machine Shops, Garages, Walkways, Auditoriums and Hangars.

Dur-A-Glaze #4 WB Primer

A two component, water-borne, low-VOC epoxy designed to prime new or existing concrete floors.

Dur-A-Glaze® MVP Primer

A 2-component, 100% solids moisture mitigation system. It reduces moisture levels as high as 99% RH and 20 lbs./1,000 sq.ft./24 hrs. to less than 3 lbs./1,000 sq.ft./24 hrs. It can be used under any Dur-A-Flex epoxy floor system.

Dur-A-Glaze® #4 Tie Coat II Special Adhesive Primer

When an extra strong bond is required for your primary coat, Dur-A-Glaze #4 Tie Coat II offers maximum adherence. This coating is specifically designed to adhere tenaciously to existing epoxy and urethane coatings and resurfacers as well as superhard concrete, ceramic tiles or quarry tiles.



Dur-A-Quartz

Deluxe, multi-colored quartz aggregate fused with clear 100% solids epoxy provides resistance to solvents, acids and other chemicals. Available in two grades: Q28 (fine) and Q11 (coarse), this system is **NFSI** **HIGH-TRACTION** the top choice for decorative flooring applications. Certified by The National Floor Safety Institute (NFSI) for slip resistance.

Dur-A-Chip

This decorative resurfacer features multi-color chips to provide a truly unique look. Multi-color chips are fused with 100% solids epoxy. Chips are available in macro and micro sizes.

Mica-Flex E

A decorative floor system comprised of coats of 100% solids epoxy, natural mica flakes and a durable, UV resistant urethane topcoat. Mica flakes are available in macro and micro sizes.

Dur-A-Crete

This heavy duty, trowel applied resurfacer, incorporating epoxy resins and specially graded aggregates, is ideal for repair of badly spalled and eroded substrates.

Applications: Laboratories, Shower/Locker Rooms, Manufacturing Plants, Pharmaceutical Plants, Food Processing Plants, Meat Packing Plants, Research & Clean Rooms, Supermarkets, Animal Shelters, Schools, Detention Facilities, Garage/Service Areas, Cafeterias and Hallways/Corridors.

Performance Topcoats

Epoxy and urethane topcoats improve the performance and longevity of your floors and make them easier to maintain. A choice of high gloss, low glare satin or flat finishes lets you brighten or soften the lighting in your facility.

Ultra-Clear

A clear, two component 100% solids, thermosetting epoxy designed specifically for the Dur-A-Quartz and Dur-A-Chip decorative flooring systems. Ultra-Clear protects against UV rays and helps prevent ambering.

Poly-Thane #1

A superior corrosion resistant, clear coating for the highest level of chemical resistance. Recommended as a topcoat for Shop Floor, Dur-A-Gard and Dur-A-Quartz flooring systems.

Poly-Thane #2 High Solids

Abrasion and stain resistant, non-ambering protective coating; recommended as a topcoat over Dur-A-Gard, Shop Floor, Novolac or Dur-A-Quartz systems.

Dur-A-Glaze Novolac

This 100% solids, no VOC, epoxy coating is specified as a topcoat when the ability to withstand corrosion and high heat is a priority.

Dur-A-Glaze #5

Our no-odor, fast curing, UV resistant, clear topcoat; recommended as a topcoat for Dur-A-Quartz and Dur-A-Chip decorative floor systems or when an odor free topcoat is required.

Armor Top®

A three component aliphatic urethane protective coating. Formulated for high traffic areas to protect against chemicals and wear; recommended as a final topcoat over Dur-A-Glaze #4 or Dur-A-Gard systems.

Crete-Gard

Formulated especially for Dur-A-Crete trowel applied mortar systems, this advanced chemistry, super high viscosity hardener, saves time and material—enabling you to finish your floor with a single coating.

Applications: Aircraft Hangars, Clean Rooms, Plastic Manufacturing Plants, Fire-Rescue Emergency, Kennels, Pharmaceutical Plants, Automotive Service Areas, Chemical Storage Areas and AGV Charging Areas.



860-528-9838 | dur-a-flex.com



DUR-A-FLEX®
INNOVATION FROM THE FLOOR UP

DUR-A-FLEX – Heavy Duty Epoxies



Coatings / Floor & Wall

Versatile, performance proven, chemical and abrasion resistant epoxy coatings are the principal components of Dur-A-Flex flooring systems. Our special formulations and additives include chemical, UV and heat resistant coatings, plus Novolac and an antimicrobial treatment.

Dur-A-Glaze #4

Dur-A-Glaze #4 functions primarily as a matrix component and aggregate binder for Dur-A-Quartz, Shop Floor and Dur-A-Crete systems. The most advanced product of its kind, this clear, two component, liquid formulation of 100% solids epoxy resins gives you optimum hardness with impact and vibration resistance. Dur-A-Glaze #4 special purpose formulations include “Fast” (cures to “touch dry” in 2 - 3 hours) and “Cold Cure” (for sub -50° F temperatures).

Dur-A-Flex Epoxy Flooring with Antimicrobial Treatment

For long term protection from a broad spectrum of bacteria and fungus, an antimicrobial additive can be used with any Dur-A-Flex 100% solids coating. An ideal solution for bathrooms, show-ers, locker rooms and swimming pool decks.

Dur-A-Gard and Dur-A-Gard SL

Dur-A-Gard forms a smooth, high gloss finish and is also available in an orange peel finish formulation. If standard slip resistant performance is required, non-skid grit can be added during application. Dur-A-Gard SL contains special fillers, which make it more suitable for self leveling applications where thicker systems from 35 -120 mils are desired.

ReFLEXions

A decorative, poured in place flooring system combining Dur-A-Flex’s durable and reliable resin systems with the latest in effects pigments to produce inspiring one-of-a-kind looks.

Dur-A-Wall HP

Our two-component urethane wall system offering outstanding chemical resistance and durability — ideally suited for application on concrete, wood, drywall, cement board or block.

Dur-A-Wall HP Plus

A high build system offering the same features and benefits as Dur-A-Wall HP but with an added two-component epoxy build for rough surfaces.

Dur-A-Wall HPF

A high build system offering the same features and benefits as Dur-A-Wall HP Plus but with an integrated fiberglass mat for added strength. Specifically designed for sheetrock wall applications.

Dur-A-Wall VC

This decorative, epoxy wall system is a two component, low odor, 100% thermosetting formulation of Dur-A-Wall pigmented epoxy, Dur-A-Wall clear epoxy and our decorative vinyl chip.

Applications: Laboratories, Clean Rooms, Pharmaceutical Plants, Hospitals, Warehouses, Kennels, Manufacturing Plants and Marine Uses.

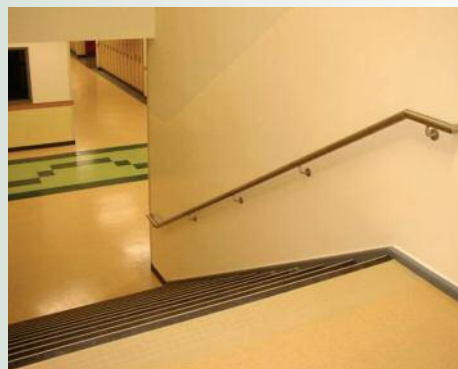
ESD Coatings

Dur-A-Gard ESD

An epoxy-based ESD system offering low odor with a smooth finish. Good abrasion and chemical resistance in a two-component system.

Armor-Stat ESD

An epoxy-urethane ESD system offering superior abrasion and chemical resistance makes it one of the longest-wearing ESD floor systems available in the industry. The three-step system offers our highest static protection from primer through urethane topcoat. Excellent UV resistance ensures consistent color throughout the life of the floor.



POLY-CRETE® – High Performance Urethanes



Performance Topcoats

Urethane topcoats improve the performance and longevity of your floors and make them easier to maintain. A choice of high gloss or flat finishes lets you brighten or soften the lighting in your facility.

Poly-Crete Color-Fast

As Poly-Crete products have increased in popularity, the customer demand for a UV stable topcoat (with a glossy appearance) has been met. This revolutionary topcoat product is the perfect solution for a color stable floor that is not affected by UV light. Use Poly-Crete Color-Fast to refresh your existing cementitious urethane floor to "like new" standards for a fraction of the cost of the original floor.

Poly-Crete TF Plus

A solvent free, high build coating based upon polyurethane technology designed as a topcoat for Poly-Crete HF.

Applications: Commercial Kitchens, Food Processing Plants, Meat Packing Plants, Bottling Plants.



Resurfacers

Our urethane products meet strict food safety guidelines. All Dur-A-Flex products can be formulated to be VOC compliant.

Poly-Crete® HF

Our trowel-applied cementitious urethane features exceptional durability, high service temperature capabilities and rapid installation time.

Poly-Crete MD

This 100% solids, aromatic cementitious urethane system is blended with graded silica and fine fillers to produce a self leveling matte finish of uniform color.

Poly-Crete MDB

This is our 100% solids, aromatic cementitious urethane system with a broadcast aggregate. Poly-Crete MDB uses a natural quartz aggregate and is available in a wide range of standard colors.



Certified by The National Floor Safety Institute (NFSI) for slip resistance.

Poly-Crete SLB

A 100% solids, aromatic cementitious urethane system with a self leveling quartz broadcast aggregate.

Applications: Kitchens, Laboratories, Shower/Locker Rooms, Manufacturing Plants, Pharmaceutical Plants, Food Processing Plants, Meat Packing Plants, Research & Clean Rooms, Supermarkets, Animal Shelters, Schools, Detention Facilities, Garage/Service Areas, Cafeterias and Hallways/Corridors.

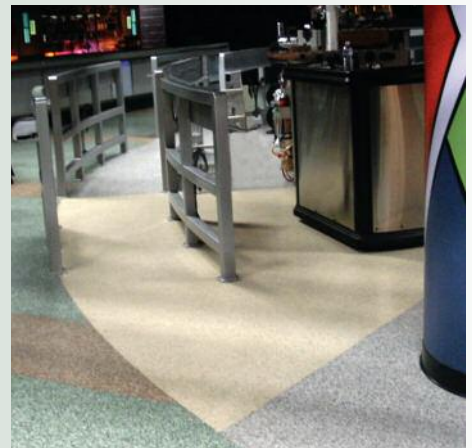


860-528-9838 | dur-a-flex.com



DUR-A-FLEX®
INNOVATION FROM THE FLOOR UP

HYBRI-FLEX® – Time & Material Saving Hybrids



Hybri-Flex MQ

A 100% solids, decorative quartz system utilizing colored quartz aggregates with clear coatings. Quartz is available in two grades: Q28 (fine) and Q11 (coarse).

Hybri-Flex MC

A 100% solids, decorative chip system utilizing colored chips with clear coatings. Chips are available in two sizes: macro and micro.

Hybri-Flex MB

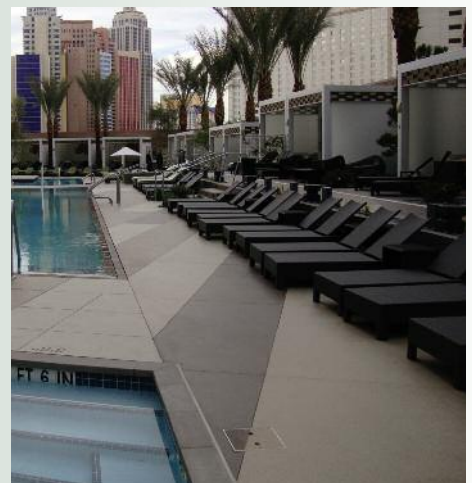
A 100% solids, natural quartz system utilizing neutral-colored aggregate with pigmented coatings. Quartz is available in two grades: Flintshot (fine) and Q-Rok (coarse).

Applications: Waterparks/Pool Areas, Educational Facilities, Indoor and Outdoor Walkways, Retail, Restaurants, Pharmaceutical Plants, Veterinary Facilities and Healthcare Facilities.

Hybri-Flex® is Dur-A-Flex's line of hybrid flooring systems, a combination of our best products to meet the needs of virtually any flooring application. All Hybri-Flex systems start with our unique, self priming cementitious urethane base coat that offers tenacious bonding in a self leveling formula, while tolerating elevated moisture levels. As a result, Hybri-Flex flooring systems can be installed over 5 - 7 day old concrete, making them ideal for fast-track installations. Choose from a series of build and topcoats to meet your specific job requirements. Hybri-Flex systems are VOC compliant and contribute to LEED credits.

Series M

Hybri-Flex M utilizes our methyl methacrylate build and topcoat products offering ultra-fast curing making it ideal for applications where minimum downtime is required. It also offers excellent wear characteristics and UV protection making it ideal for outdoor applications.





Series A

Hybri-Flex A utilizes our Accelera topcoat product offering excellent chemical resistance and wear characteristics with a high gloss finish. It is also odorless, making it ideal for occupied areas.

Hybri-Flex AC

A 100% solids, low odor, decorative chip system. Chips are available in two sizes: macro and micro.

Hybri-Flex AQ

A 100% solids, no odor, decorative quartz system. Quartz is available in blended and solid colors and in two grades: Q28 (fine) and Q11 (coarse).

Applications: Malls, Hospitals, Labs, Commercial Businesses and Educational Facilities.



Series E

Hybri-Flex E utilizes our broad line of epoxy products offering a cost effective flooring solution.

Hybri-Flex EQ

A decorative color quartz system available in blended and solid colors and in two grades: Q28 (fine) and Q11 (coarse).

Hybri-Flex EC

A decorative chip system available in standard and custom (macro only) blended colors and in two sizes: macro and micro.

Hybri-Flex EB

A natural, quartz system utilizing neutral-colored aggregate with pigmented coatings. Quartz is available in two grades: Flintshot (fine) and Q-Rok (coarse).

Hybri-Flex ES

A smooth finish system utilizing solid color resins with our wear-resistant Armor Top coating.

Applications: Manufacturing Areas, Pharmaceutical Plants and Warehouses.



860-528-9838 | dur-a-flex.com



DUR-A-FLEX
INNOVATION FROM THE FLOOR UP

CRYL-A-FLEX – Quick Curing Methyl Methacrylates



Cryl-A-Gard SL

A smooth finish, solid color, self leveling overlay system finished with a clear topcoat.

Cryl-A-Chip

A system that uses Micro or Macro decorative color chip to give a very decorative, terrazzo-like appearance. Composed of primer, double broadcast of chips into a body coat and two clear topcoats.

Cryl-A-Chip SL

A self leveling system with decorative chip broadcast and two clear topcoats. The system has excellent hiding power for an uneven or rough substrate and yields greater impact resistance.

Mica-Flex M

A decorative floor system composed of 100% reactive, fast curing, high strength methyl methacrylate (MMA), natural mica flakes and MMA topcoats. Mica flakes are available in both micro and macro sizes.

Resurfacers

The Cryl-A-Flex line of super fast curing methyl methacrylate (MMA) systems meets the most demanding requirements for application in cold interior or exterior environments curing in less than one hour in temperatures as low as 0° F. These VOC compliant, 100% reactive resins and select graded aggregate fillers form a highly versatile flooring solution. Characteristics include strength, flexibility and a low glare, satin finish. These seamless systems can be finished with a variety of slip resistant or smooth textures. Cryl-A-Flex can be supplemented with an antimicrobial additive. All Cryl-A-Flex products meet strict food safety guidelines.

Floor Coatings

Cryl-A-Stain®

Cryl-A-Stain is a topical, concrete coloring floor system that provides the decorative beauty of stained / dyed concrete. It delivers affordable, lasting beauty with the added benefit of low maintenance costs.

Cryl-A-Quartz

The acrylic counterpart to our decorative Dur-A-Quartz resurfacer. Composed of primer, double broadcast of Dur-A-Flex's Q11 or Q28 decorative quartz aggregate into a body coat and two clear, wear resistant topcoats. This system offers a wide variety of surface textures.

Cryl-A-Quartz SL

A self leveling flooring system with a Q11 or Q28 decorative colored quartz aggregate broadcast and two topcoats. This system offers a wide variety of surface textures.

Cryl-A-Floor

This double broadcast system uses natural quartz sand with two solid colored topcoats. This system offers a wide variety of surface textures.

Cryl-A-Floor SL

A self leveling flooring system using the same natural quartz as in the Cryl-A-Floor system with two solid colored topcoats. This system is perfect for uneven substrates, while offering greater impact resistance and high strength for abusive environments.

Cryl-A-Tex

Polymer concrete is used for the repair of concrete. This includes, but is not limited to, spall, potholes, joint rebuilding, anchor bolt grouting and structural applications.

Cryl-A-Wall VC

The acrylic equivalent to our Dur-A-Wall VC system, this decorative wall system is extremely sanitary, easy to clean and durable.

Applications: Kitchens, Warehouses, Laboratories, Freezers, Meat Packing Plants, Sidewalks, Pharmaceutical, Machine Shops, Chemical Storage Facilities, Food Processing Plants, Radio and Television Studios and Parking Decks.



ACCELERA® — Fast-Track Flooring

Accelerera standard systems feature proprietary Aresins throughout for a fast-installing, high performance floor system. Standard systems include decorative vinyl chip and quartz broadcast designs as well as solid color broadcast systems for more industrial applications.

Standard Series

Accelerera B

A 100% solids, fast curing, low odor decorative vinyl chip system consisting of a clear primer, two pigmented broadcasts of flintshot quartz, and two pigmented topcoats. It features UV stability and excellent chemical resistance.

Accelerera C

A 100% solids, fast curing, low odor decorative vinyl chip system consisting of a pigmented primer, a clear body coat with a decorative vinyl chip broadcast, and two clear topcoats. It features UV stability and excellent chemical resistance.

Accelerera Q

a 100% solids, fast curing, low odor, decorative quartz broadcast flooring system consisting of a clear primer, two broadcasts of decorative quartz, and two clear topcoats. It features UV stability and excellent chemical resistance.

Hybrid Series

Accelerera hybrid systems feature the same design options as the standard systems with the added feature of a high-moisture tolerant and self priming cementitious urethane basecoat. Hybrid systems are the ideal choice for fast installations needed in new construction, installing over concrete as new as 5 - 7 days old.

Accelerera HB

A 100% solids hybrid flooring system consisting of a moisture-tolerant self leveling cementitious urethane base coat with a flintshot quartz broadcast, a pigmented Accelerera second broadcast and two pigmented Accelerera topcoats. It features UV stability and excellent chemical resistance.

Accelerera HC

A 100% solids hybrid flooring system consisting of a moisture-tolerant self leveling cementitious urethane base coat with a decorative vinyl chip broadcast, an Accelerera second broadcast and two clear Accelerera topcoats. It features UV stability and excellent chemical resistance.

Accelerera HQ

A 100% solids hybrid flooring system consisting of a moisture-tolerant self leveling cementitious urethane base coat with a decorative quartz broadcast, an Accelerera second broadcast and two clear Accelerera topcoats. It features UV stability and excellent chemical resistance.



Dur-A-Flex, Inc. — The Seamless Solution

No one makes it easier

Every step of the way, you'll experience superior customer service, professionalism, expertise and finely tuned processes—all the essentials which contribute to a solid business relationship. We call it, "The Seamless Solution."

Quality Assurance

Exceptional quality begins at the source. Dur-A-Flex starts with superior raw materials to formulate the industry's finest hardeners, resins and colored quartz aggregates. Manufacturing processes and material handling are strictly controlled and documented as part of our real-time, quality management and batch-tracking processes. In addition to our in-house testing program, our products are evaluated by independent labs to validate test results.

Research & Development

Our substantial investment in R&D means that whenever you choose a Dur-A-Flex flooring system, you're getting the most tested and innovative products on the market. Performance is the ultimate benchmark and Dur-A-Flex is determined to deliver the most reliable products paired with a complete range of advanced special purpose formulations and additives to meet your unique requirements.

Sales & Technical Support

Dur-A-Flex has a knowledgeable sales team and technical support department to help you select the most appropriate system for your project from our wide range of products. This support extends to job site and installation assistance as well as engineering assistance for new flooring systems applications.

Custom Samples

Our dedicated Design Center offers samples for each of our standard systems and custom color matches upon your request.

Full-Service Specification Assistance

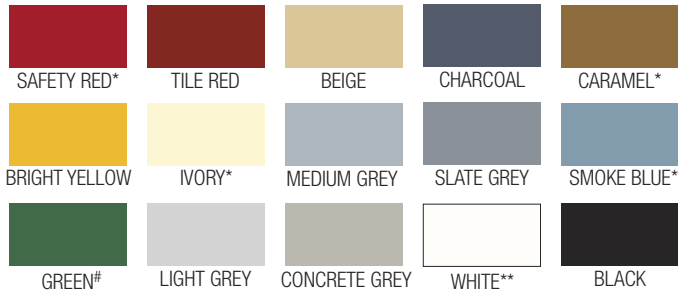
We provide the industry standard 3-part guide specifications—General, Products, Execution—which you can easily incorporate into your project manual. These specifications cover our products in a variety of job site scenarios.



DUR-A-FLEX®
INNOVATION FROM THE FLOOR UP

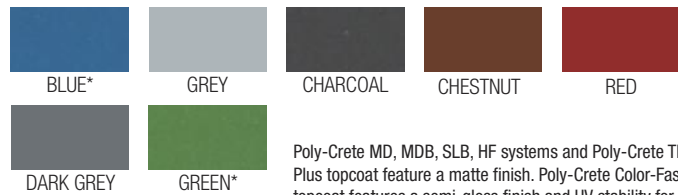
The samples shown are only close approximations and should not be used for specification purposes.
Contact Dur-A-Flex to obtain actual samples for best color selection.

Standard Colors



*Not available in MMA #Not available in Armor Top **Not available in Shop Floor

Poly-Crete® Colors

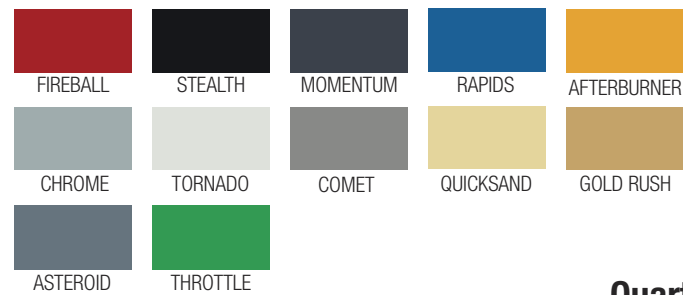


Poly-Crete MD, MDB, SLB, HF systems and Poly-Crete TF Plus topcoat feature a matte finish. Poly-Crete Color-Fast topcoat features a semi-gloss finish and UV stability for color retention. *Poly-Crete Color-Fast in these colors require a grout coat of Poly-Crete TF Plus to ensure consistent color.

Poly-Crete® Natural SL Colors



Accelera® Standard Colors



Mica-Flake



All mica samples shown contain metallic flakes. Available in macro and micro sizes.

Earthstone Blends

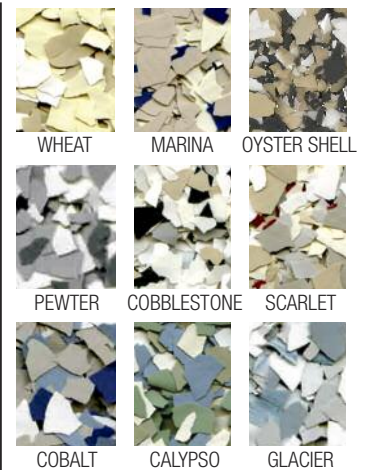


Available in macro size only.

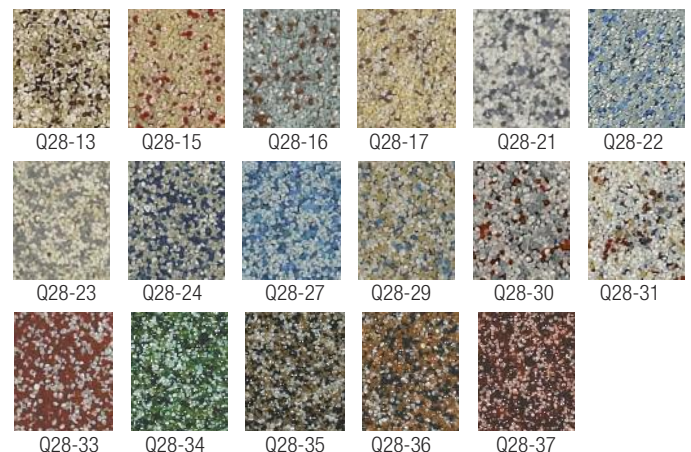
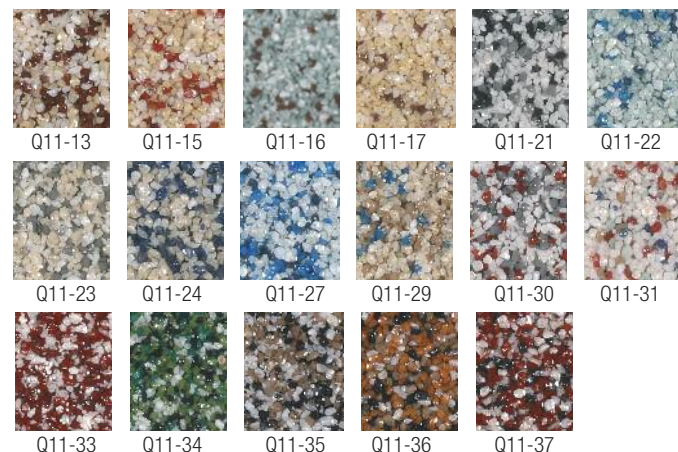
Micro Chip Blends



Macro Chip Blends



Quartz Blends



DUR-A-FLEX®
INNOVATION FROM THE FLOOR UP

CONNECTICUT | ILLINOIS | CALIFORNIA
Toll Free 800-253-3539 | 860-528-9838 | www.dur-a-flex.com