

# DECORATIVE TOPPING SOLUTIONS

**Ultratop®** Natural, Polished  
and Terrazzo Systems





Resurfacing concrete, especially concrete flooring in heavy-traffic venues, can be challenging. Installers need products that are attractive, textured and highly durable, yet also offer fast-tracked application and curing times.

MAPEI helps to answer those challenges with three unique *Ultratop* systems:

- ***Ultratop* Natural System**
- ***Ultratop* Polished System**
- ***Ultratop* Terrazzo System**

MAPEI's *Ultratop* systems are engineered to provide extremely durable yet visually pleasing flooring surfaces for residential, industrial and commercial buildings. Such surfaces are especially desirable for large public venues that feature heavy foot traffic, like hotels, malls, museums, theaters, stadiums and exhibition halls. These high-performance, fast-track, self-leveling, cementitious topping systems quickly resurface a wide variety of surfaces, providing best-in-class quality and endurance for every need. When used with diamond polishing or a *Mapefloor*™ *Finish* coating, these systems provide a combination of accelerated protection and durable, aesthetic surface effects.



MAPEI's FastTrack Ready products reduce the required steps of an installation and/or perform more quickly than current methods.



SCS Global Services' Indoor Advantage Gold certification signifies that select products' VOC emissions have been tested and comply with California Department of Health (CDPH) Standard Method v1.2-2017.

# Ultratop Polished System



Sealers and densifiers from *Mapecrete* and *Mapecrete* range

Cementitious topping from *Ultratop* range

Epoxy primer + sand broadcast

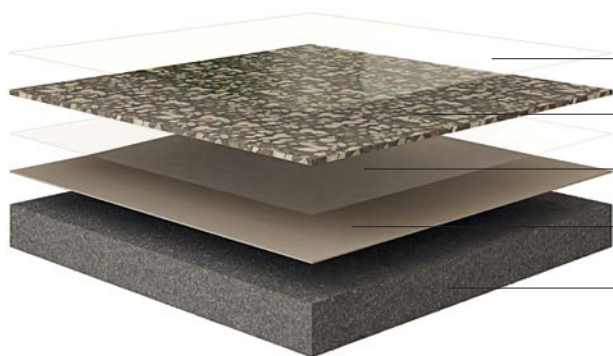
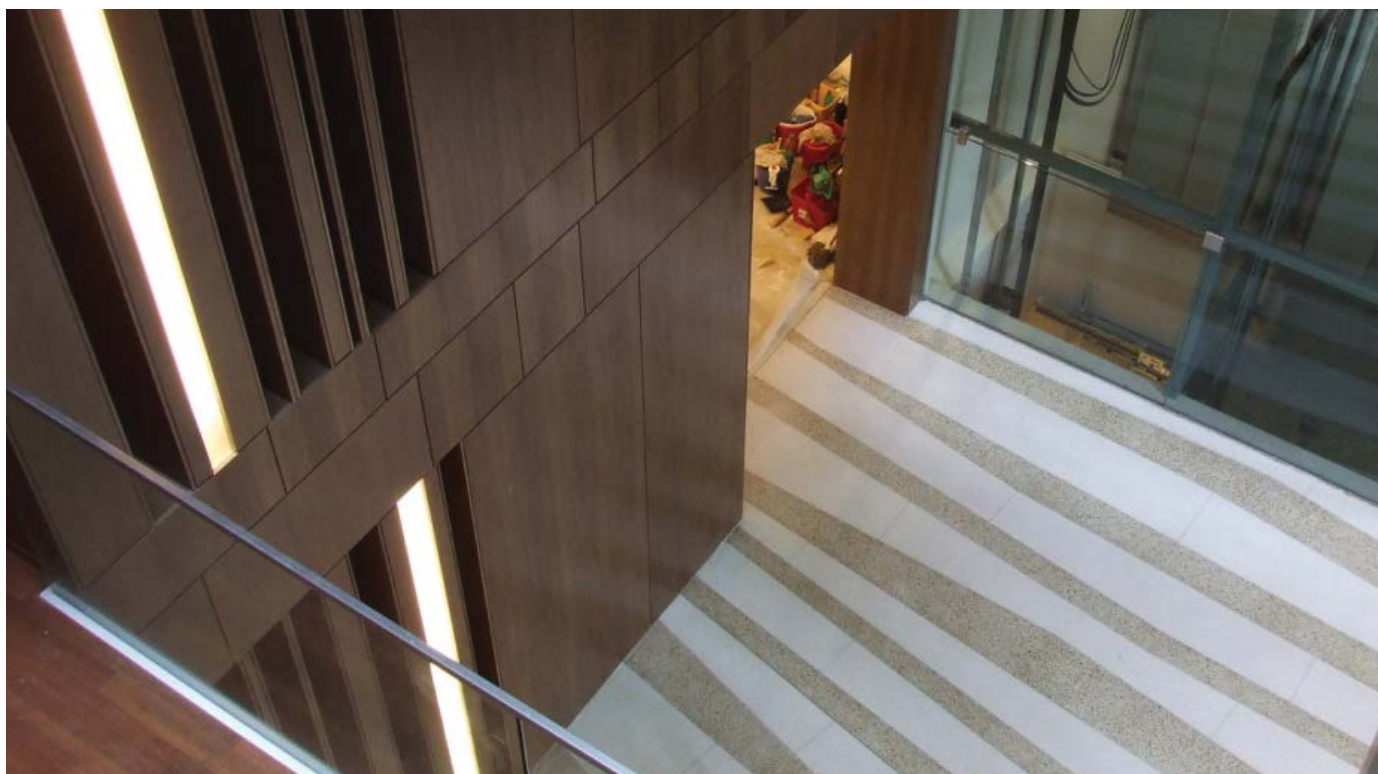
Concrete substrate prepared to CSP#3

- System components can be selected based on the desired design.
- The system is polishable by using proper grinding/polishing equipment.
- The sealer must be selected based on the specified system in order to achieve the desired finish.

Primers	Cementitious Toppings	Sealers
<b>Primer SN™</b> epoxy primer	<b>Ultratop</b> Natural Gray self-leveling, fast-track topping	<b>Mapecrete™ Hard LI</b> lithium silicate, densifier and sealer
<b>Primer SN Fast</b> fast-setting, epoxy primer	<b>Ultratop</b> White self-leveling, fast-track topping	<b>Mapecrete Protector FF</b> high-gloss protective coating

Dyes and integral colors designed for cementitious toppings may be used. E-mail MAPEI Technical Services at [CRS@mapei.com](mailto:CRS@mapei.com) for recommendations. The system can be extended on site with dry aggregates up to 1/4" (6 mm) in size, based on the desired design.

# Ultratop Terrazzo System



Sealers and densifiers from *Mapecrete* range

Cementitious toppings from *Ultratop* range and large aggregate size

Epoxy binder to fix large aggregate size

Epoxy primer + sand broadcast

Concrete substrate prepared to CSP#3

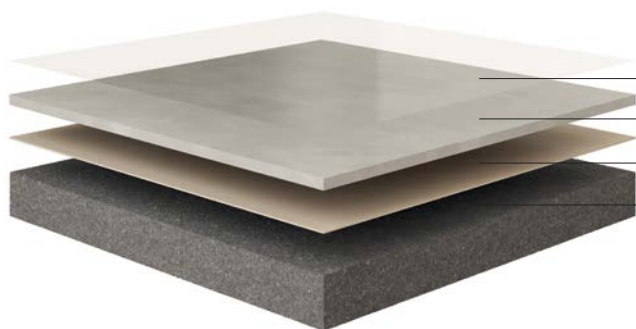
The *Ultratop* Terrazzo System replicates the look of terrazzo. This is achieved by using large aggregates ranging in size from 3/8" to 3/4" (10 to 19 mm). In order to create the terrazzo effect, the two-component epoxy binder *Mapecrete I 900* must be used to secure the aggregates before *Ultratop* is applied.

- System components can be selected based on the desired design.
- The system is polishable by using proper grinding/polishing equipment.
- The sealer must be selected based on the specified system in order to achieve the desired finish.

Primers	Cementitious Toppings	Sealers
<b>Primer SN™</b> epoxy primer	<b>Ultratop</b> Natural Gray self-leveling, fast-track topping	<b>Mapecrete™ Hard LI</b> lithium silicate, densifier and sealer
<b>Primer SN Fast</b> fast-setting, epoxy primer	<b>Ultratop</b> White self-leveling, fast-track topping	<b>Mapecrete Protector FF</b> high-gloss protective coating

Dyes and integral colors designed for cementitious toppings may be used. E-mail MAPEI Technical Services at [CRS@mapei.com](mailto:CRS@mapei.com) for recommendations.

# Ultratop Natural System



Sealers from *Mapecfloor Finish* range  
 Cementitious topping from *Ultratop* range  
 Epoxy primer + sand broadcast  
 Concrete substrate prepared to CSP#3

- System components can be selected based on the desired design.
- The sealer must be selected based on the specified system in order to achieve the desired finish.

Primers	Cementitious Toppings	Sealers
<b>Primer SN™</b> epoxy primer	<b>Ultratop</b> Natural Gray self-leveling, fast-track topping	<b>Mapecfloor™ Finish 630</b> clear, protective acrylic coating
<b>Primer SN Fast</b> fast-setting, epoxy primer	<b>Ultratop</b> White self-leveling, fast-track topping	<b>Mapecfloor Finish 58 W</b> matte-finish polyurethane coating
		<b>Mapecrete™ Protector FF</b> high-gloss protective coating

Dyes and integral colors designed for cementitious toppings may be used. E-mail MAPEI Technical Services at [CRS@mapei.com](mailto:CRS@mapei.com) for recommendations.

# Installation Specs



**Ultratop**  
Natural System

This system is designed for resurfacing indoor concrete floors, producing creative surfaces with the effect of natural shades.

Examine substrates and conditions under which materials will be installed.

Mechanical preparation of the surface is required to obtain a minimum ICRI Concrete Surface Profile of 3 (CSP #3).

Always use foam tape to round off column bases as well as any sharp corners that protrude into the room receiving the topping.

Always prime the prepared surface with MAPEI's *Primer SN* or *Primer SN Fast* following with a full sand broadcast (to rejection) with #20 to #40 mesh sand.

MAPEI's *Planiseal*® MB 100%-solids, epoxy moisture barrier can be installed if required.

All existing construction/control/expansion joints, saw cuts and moving cracks must be properly repaired. Honoring joints in a self-leveled floor is critical to the success of the installation.

*Ultratop* Natural System can be easily installed from 1/4" to 2" (6 mm to 5 cm). It quickly hardens within 2 to 3 hours.

Always use the proper MAPEI sealer for stain protection.



**Ultratop**  
Polished System

This system is designed for resurfacing indoor polished concrete floors using dry-polishing techniques.

Examine substrates and conditions under which materials will be installed.

Mechanical preparation of the surface is required to obtain a minimum ICRI Concrete Surface Profile of 3 (CSP #3).

Always use foam tape to round off column bases as well as any sharp corners that protrude into the room receiving the topping.

Always prime the prepared surface with MAPEI's *Primer SN* or *Primer SN Fast* following with a full sand broadcast (to rejection) with #16 to #30 mesh sand.

MAPEI's *Planiseal* MB 100%-solids, epoxy moisture barrier can be installed if required.

All existing construction/control/expansion joints, saw cuts and moving cracks must be properly repaired. Honoring joints in a self-leveled floor is critical to the success of the installation.

*Ultratop* Polished System can be easily installed from 3/8" to 2" (10 mm to 5 cm). It quickly hardens within 2 to 3 hours.

Concrete-polish equipment and tooling for use as part of the multi-step dry mechanical process and accessories must be in good condition per the contractor recommendations.

Film-forming, high-gloss protective coating *Mapecrete Protector FF* is recommended. Finish the coating as determined by the intended use of the *Ultratop* surface.



**Ultratop**  
Terrazzo System

This system is designed for indoor concrete floors with large aggregate exposed, using epoxy binder in order to blend and affix large aggregate from 3/8" to 3/4" (10 to 19 mm) in size.

Examine substrates and conditions under which materials will be installed.

Mechanical preparation of the surface is required to obtain a minimum ICRI Concrete Surface Profile of 3 (CSP #3).

Always use foam tape to round off column bases as well as any sharp corners that protrude into the room receiving the topping.

Always prime the prepared surface with MAPEI's *Primer SN* or *Primer SN Fast* following with a full sand broadcast (to rejection) with #16 to #30 mesh sand.

MAPEI's *Planiseal* MB 100%-solids, epoxy moisture barrier can be installed if required.

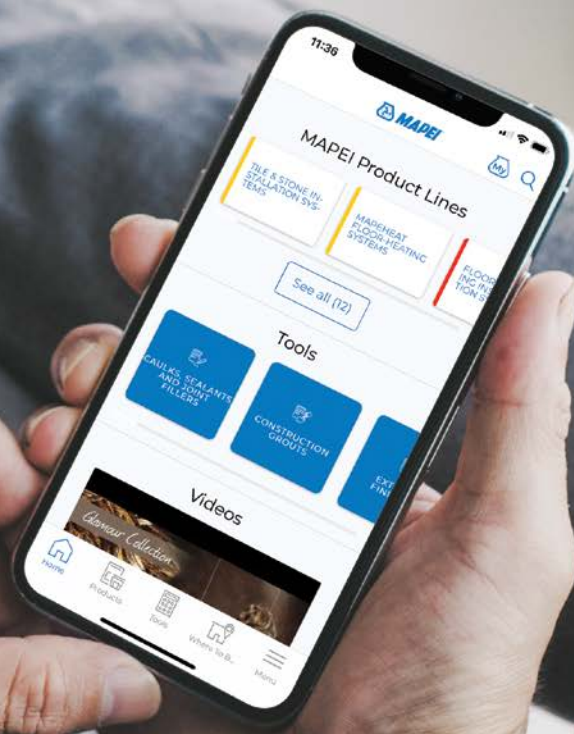
All existing construction/control/expansion joints, saw cuts and moving cracks must be properly repaired. Honoring joints in a self-leveled floor is critical to the success of the installation.

Concrete-polish equipment and tooling for use as part of the multi-step dry mechanical process and accessories must be in good condition per the contractor recommendations.

Film-forming, high-gloss protective coating *Mapecrete Protector FF* is recommended. Finish the coating as determined by the intended use of the *Ultratop* surface.

NOTE: For surfaces with fine aggregates exposed, use *Ultratop* only and extend it on site with fine aggregates from 3/16" to 1/4" (4.5 to 6 mm) in size. No *Mapecrete* 1900 epoxy binder is required to blend and affix fine aggregates.

# Better than ever: **MAPEI's** new app



Available for free download on the App Store or Google Play, MAPEI's revamped app puts the power of MAPEI in the palm of your hand. The solutions to a wide range of problems are just a touch away.



Simply uninstall your existing MAPEI app and install MAPEI's updated app to stay up to date with the latest information from MAPEI, including:



- Technical Data Sheets for all of MAPEI's extensive product lines.



- Links to MAPEI's video library, for quick access to product spotlights, MTI-TV episodes and more.



- All of MAPEI's 11 product calculators, to help you estimate how much product you'll need.



- A "Where to Buy" section that lets you look up the distributor closest to you.



- **Realità MAPEI North America**, MAPEI's popular magazine, for the latest on industry information, the latest product technology and more.

More than ever, the new app brings MAPEI's vast technical resources to your phone.

Be sure to first uninstall your existing MAPEI app. Then install MAPEI's updated app to access the latest information from MAPEI.

For your free download of MAPEI's new app, visit the App Store or Google Play.



#### **MAPEI Headquarters of North America**

1144 East Newport Center Drive  
Deerfield Beach, Florida 33442  
1-888-US-MAPEI (1-888-876-2734) /  
(954) 246-8888

#### **Technical Services**

1-888-365-0614 (U.S. and Puerto Rico)  
1-800-361-9309 (Canada)  
CRS@mapei.com

#### **Customer Service**

1-800-42-MAPEI (1-800-426-2734)

#### **Services in Mexico**

0-1-800-MX-MAPEI (0-1-800-696-2734)

Copyright ©2021 by MAPEI Corporation ("MAPEI") and all rights are reserved. All intellectual property rights and other information contained in this document are the exclusive property of MAPEI (or its parent or related companies), unless otherwise noted. No part of this document may be reproduced or transmitted in any form without the prior written consent of MAPEI.

Printed in the USA.

