



# FLUID-APPLIED TRAFFIC COATING SYSTEMS

*Comprehensive Solutions for Pedestrian, Vehicular and Specialty Applications*





## CONNECTIONS: THE KEY TO LONG-TERM SUCCESS

When it comes to protecting the entire building envelope, Tremco stands alone as your single source manufacturer of choice. On-site training, field support, and sustainable solutions designed to streamline your design and installation process are only a few of the value-added solutions we provide. Our team is adept at resolving numerous building envelope challenges that you may encounter on the job — and we pride ourselves on helping your team realize the maximum long-term value and quality of your finished structure.

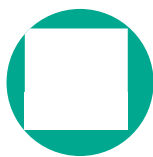
Tremco products are conceived, formulated and tested in our labs, as well as in the field to ensure maximum compatibility and connectivity. Our expertise extends to all six sides of the building envelope, providing peace of mind. You are always covered when your project abuts, adjoins or overlaps other Tremco components or systems, effectively eliminating these otherwise troublesome connection points. Few others can offer this type of comprehensive approach.

Ultimately, our attention to these connections allows us to provide unique, all-inclusive system warranty options that our competitors simply cannot match.

---

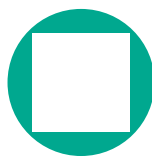
## THE TREMCO CPG DIFFERENCE

Speed construction or restoration. Simplify installation. Extend the construction season. A Tremco Construction Product Group (CPG) single-source building envelope means more for everyone — more satisfied contractors, more comfortable occupants or tenants, and more efficient structures and cost-effective operation for owners.



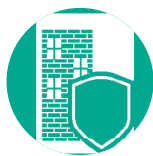
### Faster Construction Time

Lightweight, fast-curing and prefabricated products mean less occupant disruption, faster return to service, less revenue lost — and no call-backs.



### Any Look You Want

A wide range of colors and finishes like brick, granite, metals, stucco and more provide maximum flexibility in your roof and façade aesthetic.



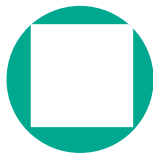
### Stronger and More Resilient

Our systems are designed for maximum durability, many with service lives far surpassing that of competing systems.



### Leak-Free Performance

Products provide maximum protection from air, moisture and thermal infiltration — and are performance tested in our one-of-a-kind Sustainable Building Solutions Test Facility.



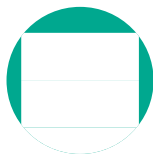
### Cost Effective for the Long Term

A broad range of products can fit any project budget — but our energy efficiency and maintenance solutions can also help you ensure cost-effective ownership and operation for the long term.



### Better Insulated

Industry-leading brands provide solutions for more efficient building construction and operation, and exceed strict energy codes for insulation.



### One Point of Contact

Our products and systems are backed by industry-leading warranties — all from a single point of contact. We can also help with everything from asset management to diagnostics to installer training.



### Leading Edge Sustainability

Our building solutions help you meet green building standards like Net Zero, Living Building Challenge, Passive House and more.

# TRAFFIC COATINGS OVERVIEW

With a wide range of solutions for vehicular, pedestrian and specialty applications, Tremco's high-performance liquid-applied membranes offer superior, long-term durability in traffic-bearing service conditions.

Our systems are designed to waterproof structures, protecting substrates from the harsh effects of chemical intrusion, thereby extending the lifecycle of these surfaces. The waterproofing layer of our systems are protected by various wear and top coats, increasing the durability of the installed system.

With over 40 years of experience in traffic coatings, we've created and developed products that meet the unique demands of any project. Our coatings portfolio addresses speed of application, durability, budget considerations and more. We also offer Neighbor Friendly (NF) formulas for sensitive area applications and a fully-compatible range of detailing sealants. Whether repair/restoration or new construction, Tremco has proven solutions for the following applications:

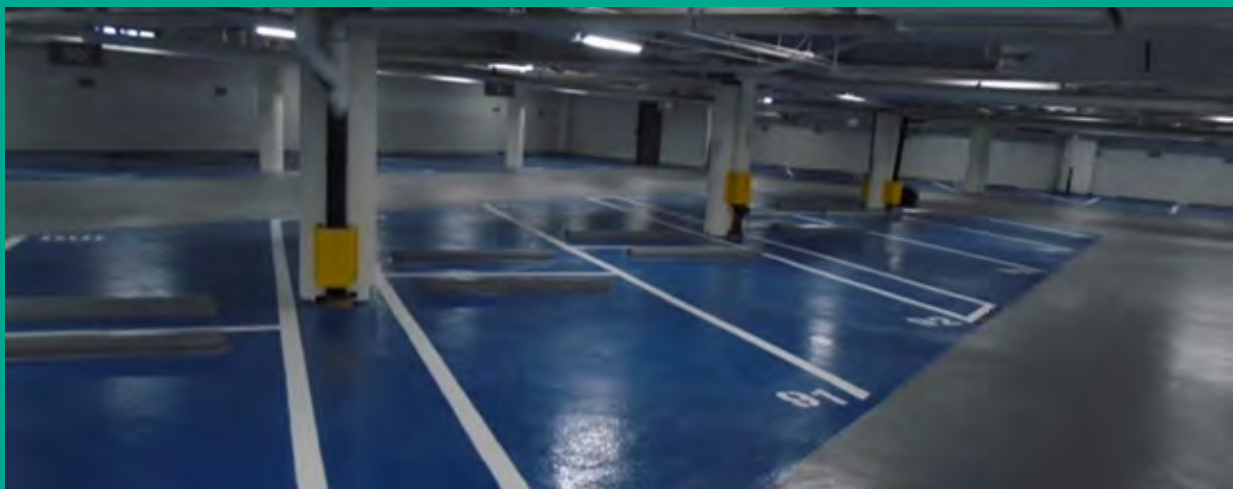
- Parking garages
- Stadiums
- Dumpster areas
- Pedestrian walkways
- Mechanical rooms
- Hardscape/pool areas
- Balconies
- Recreation decks

## Proven Performance

Tremco traffic coating products and systems are built upon a four decade track record of proven long-term performance. These systems have been independently tested to ensure they will meet the complex installation scenarios and grueling service condition demands of your project.

## On-Site Training, Testing, and Tech Support

On-site conditions always vary, presenting challenges on the project. Tremco's local technical sales representatives work with installers to provide the ideal solution. Immediate assistance is always available by calling our Technical Services Department.



# APPLICATIONS:

	Plywood	Under Tile	Pedestrian Deck	Vehicular Deck	Athletic Surface	Roof Terrace	Mechanical Room	Balcony
<b>PRIMERS</b>								
Vulkem® Primer #171 ‡	•	•	•	•	•	•	•	•
Vulkem® 191 Primer	•	•	•	•	•	•		•
Tremco Epoxy Primer	•	•	•	•	•	•	•	•
TREMprime® Multi-Surface Urethane Primer	•		•				•	•
TREMprime® VB	•	•	•	•	•	•	•	•
<b>BASE COATS</b>								
Vulkem® 350	•	•	•	•	•	•	•	•
Vulkem® 350FC								
Vulkem® 350NF	•	•	•	•	•	•	•	•
Vulkem® 360NF	•		•	•	•	•	•	•
<b>INTERMEDIATE COATS</b>								
Vulkem® 346				•				
Vulkem® 351								
Vulkem® 351NF	•							
Vulkem® 950NF				•			•	
Vulkem® Epoxy WC				•				
<b>TOP COATS</b>								
Vulkem® 346				•				
Vulkem® 351			•		•	•	•	•
Vulkem® 351NF	•		•		•	•	•	•
Vulkem® 950NF			•	•			•	
Vulkem® 951NF	•		•	•	•	•	•	•
<b>SPECIALTY</b>								
Vulkem® OC810	•		•			•	•	•

Reference the current product data sheets on our website at [www.tremcosealants.com](http://www.tremcosealants.com) for more specific product information.  
 For specific tie-in recommendations and Instructions, please contact your local Tremco Sales or Technical Service Representative.  
 ‡Not for use in Canada

# PROPERTIES:

		Low VOC	Components	UV Stable (Aliphatic)	Recommended Substrates:
<b>PRIMERS</b>					
Vulkem® Primer #171 ‡		1			Concrete, plywood, other porous substrates**
Vulkem® 191 Primer •		1			Concrete, plywood, other porous substrates**, interlaminary, urethane coatings, TREMproof membranes
Tremco Epoxy Primer •		2			Concrete, plywood, other porous substrates**, interlaminary, urethane coatings, TREMproof membranes
TREMprime® Multi-Surface Urethane Primer •		2			Concrete, plywood, other porous substrates**, interlaminary, urethane coatings
TREMprime® VB •		2			Concrete, plywood, other porous substrates**, interlaminary, urethane coatings, TREMproof membranes
<b>BASE COATS</b>					
Vulkem® 350		1			Concrete, metal
Vulkem® 350FC					
Vulkem® 350NF •		1			Concrete, metal
Vulkem® 360NF •		2			Concrete, metal
<b>INTERMEDIATE COATS</b>					
Vulkem® 346		1	•		Vulkem 346
Vulkem® 351		1	•		Vulkem 350, 350NF, 360NF
Vulkem® 351NF		2	•		Vulkem 350NF
Vulkem® 950NF •		2			Vulkem 350NF
Vulkem® Epoxy WC •		2			Vulkem 350, 350NF, 360NF
<b>TOP COATS</b>					
Vulkem® 346		1	•		Vulkem 346
Vulkem® 351		1	•		Vulkem 350, 350NF, 360NF
Vulkem® 351NF •		2	•		Vulkem 350NF
Vulkem® 950NF •		2			Vulkem 350NF
Vulkem® 951NF •		2	•		Vulkem 950NF
<b>SPECIALTY</b>					
Vulkem® OC810 •		1	•		Concrete, wood (with Tremco-approved primer)

Reference the current product data sheets on our website at [www.tremcosealants.com](http://www.tremcosealants.com) for more specific product information.

For specific tie-in recommendations and Instructions, please contact your local Tremco Sales or Technical Service Representative.

\*Prior approval required by Tremco Technical Services; approval is based on compatibility and adhesion testing.

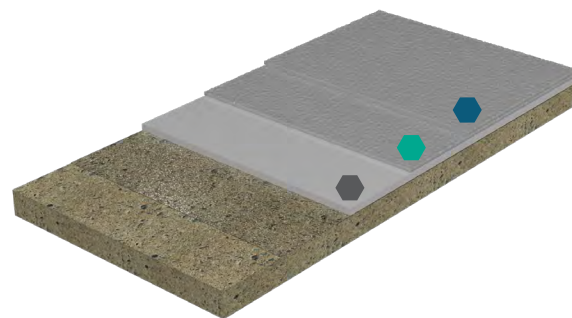
‡Not for use in Canada

# PEDESTRIAN SYSTEMS

Ideal for plazas, recreation decks, balconies, pool decks, mechanical rooms, stadiums, athletic surfaces and similar applications requiring an elastomeric waterproofing system.

## STANDARD PEDESTRIAN

Two-coat systems for applications that will receive light-to-medium pedestrian traffic, such as balconies, mechanical rooms, walkways and terraces.



Product Options		Coverage Rate	Wet Mils
Base Coats	Vulkem 350	40 to 64 ft <sup>2</sup> /gal	25 to 40
	Vulkem 350NF	64 ft <sup>2</sup> /gal	25
	Vulkem 360NF	64 ft <sup>2</sup> /gal	25
Top Coats	Vulkem 351	105 ft <sup>2</sup> /gal	15
	Vulkem 351NF	105 ft <sup>2</sup> /gal	15
	Vulkem 950NF	133 ft <sup>2</sup> /gal	12
	Vulkem 951NF	133 ft <sup>2</sup> /gal	12

### Typical Systems

**Standard:** 350NF / 351

**Low VOC:** 350NF / 351NF

**Quick-Cure, Low VOC:** 360NF / 951NF

Contact your local Tremco Sales Representative to determine the highest-performing system based on regional needs.

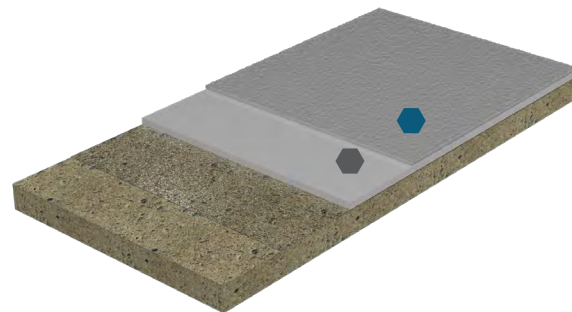


# PEDESTRIAN SYSTEMS

Ideal for plazas, recreation decks, balconies, pool decks, mechanical rooms, stadiums, athletic surfaces and similar applications requiring an elastomeric waterproofing system.

## HEAVY-DUTY PEDESTRIAN

Three-coat systems for areas that will be exposed to steady foot traffic, such as stadiums, amenity decks and pedestrian bridges.



Product Options		Coverage Rate	Wet Mils
Base Coats	Vulkem 350	40 to 64 ft <sup>2</sup> /gal	25 to 40
	Vulkem 350NF	64 ft <sup>2</sup> /gal	25 to 40
	Vulkem 360NF	64 ft <sup>2</sup> /gal	25 to 40
Intermediate	Vulkem 351	105 ft <sup>2</sup> /gal	15
	Vulkem 351NF	105 ft <sup>2</sup> /gal	15
	Vulkem 950NF	133 ft <sup>2</sup> /gal	12
Top Coats	Vulkem 351	105 ft <sup>2</sup> /gal	15
	Vulkem 351NF	105 ft <sup>2</sup> /gal	15
	Vulkem 950NF	133 ft <sup>2</sup> /gal	12
	Vulkem 951NF	133 ft <sup>2</sup> /gal	12

### Typical Systems

**Standard:** 350NF / 351 / 351

**Quick-Cure, Low VOC:** 360NF / 951NF / 951NF

Contact your local Tremco Sales Representative to determine the highest-performing system based on regional needs.

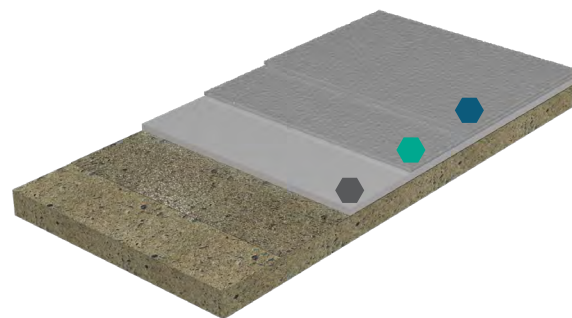


# VEHICULAR SYSTEMS

Ideal for waterproofing concrete slabs and protecting occupied areas underneath from water damage, while protecting from the damaging effects of water, deicing salts, chemicals, gasoline, oils and anti-freeze.

## STANDARD VEHICULAR

Three-coat systems for areas that will be exposed to standard vehicular traffic.



Product Options		Coverage Rate	Wet Mils
Base Coats	Vulkem 350	40 to 64 ft <sup>2</sup> /gal	25
	Vulkem 350NF	64 ft <sup>2</sup> /gal	25
	Vulkem 360NF	64 ft <sup>2</sup> /gal	25
Intermediate	Vulkem 346	105 ft <sup>2</sup> /gal	15
	Vulkem 950NF	133 ft <sup>2</sup> /gal	12
	Vulkem Epoxy WC	133 ft <sup>2</sup> /gal	12
Top Coats	Vulkem 346	133 to 160 ft <sup>2</sup> /gal	10 to 12
	Vulkem 950NF	133 ft <sup>2</sup> /gal	12
	Vulkem 951NF	133 ft <sup>2</sup> /gal	12

### Typical Systems

**Standard:** 350NF / 346 / 346

**Low VOC, Indoor:** 350NF / 950NF / 950NF

**Low VOC, UV Stable:** 350NF / 950NF / 951NF

**Enhanced Durability:** 350NF / Epoxy WC / 346

Vulkem 360NF can be used as a quick-cure, or low-temperature option.

Contact your local Tremco Sales Representative to determine the highest-performing system based on regional needs.

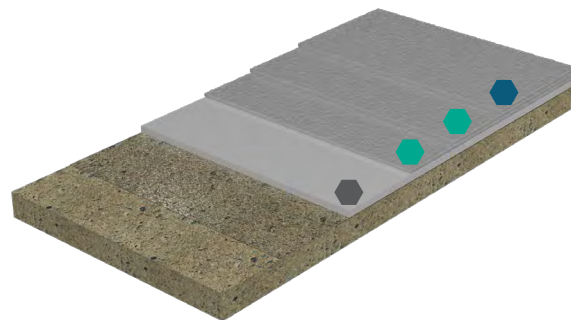


# VEHICULAR SYSTEMS

Ideal for waterproofing concrete slabs and protecting occupied areas underneath from water damage, while protecting from the damaging effects of water, deicing salts, chemicals, gasoline, oils and anti-freeze.

## HEAVY-DUTY VEHICULAR

Heavy-duty, four-coat systems for areas that will be subjected to steady vehicular traffic.



Product Options		Coverage Rate	Wet Mils
Base Coats	Vulkem 350	40 to 64 ft <sup>2</sup> /gal	25
	Vulkem 350NF	64 ft <sup>2</sup> /gal	25
	Vulkem 360NF	64 ft <sup>2</sup> /gal	25
Intermediate	Vulkem 346	105 ft <sup>2</sup> /gal	15
	Vulkem 950NF	133 ft <sup>2</sup> /gal	12
	Vulkem Epoxy WC	100 ft <sup>2</sup> /gal	16
Top Coats	Vulkem 346	133 to 160 ft <sup>2</sup> /gal	10 to 12
	Vulkem 950NF	133 ft <sup>2</sup> /gal	12
	Vulkem 951NF	133 ft <sup>2</sup> /gal	12

### Typical Systems

**Standard:** 350NF / 346 / 346 / 346

**Low VOC, Indoor:** 350NF / 950NF / 950NF / 950NF

**Low VOC, UV Stable:** 350NF / 950NF / 950NF / 951NF

**Enhanced Durability:** 350NF / Epoxy WC / 346

Vulkem 360NF can be used as a quick-cure, or low-temperature option.

Contact your local Tremco Sales Representative to determine the highest-performing system based on regional needs.

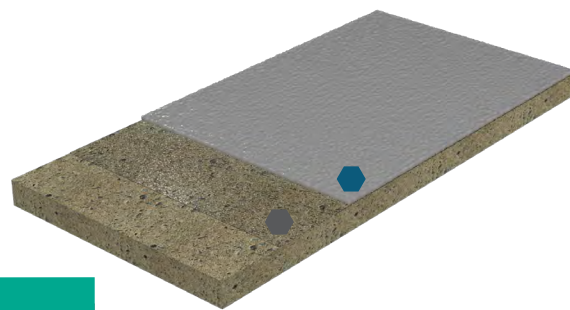


# SPECIALTY SYSTEMS

Waterproof coatings for a variety of specialty applications, including one-coat and rapid-cure solutions, as well as systems for under-tile applications, mechanical rooms and areas subject to heavy abrasion.

## BALCONY, LIGHT PEDESTRIAN & MECHANICAL ROOM

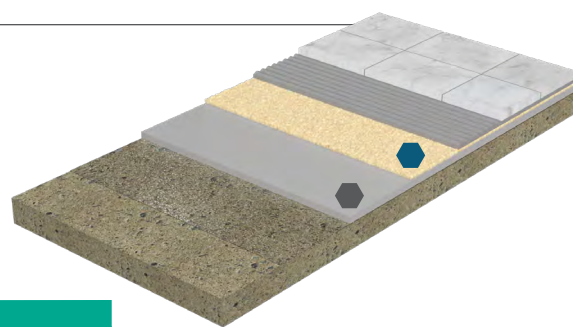
One-coat systems for areas that will receive light foot traffic such as balconies and mechanical rooms / work areas.



Product Options		Coverage Rate	Wet Mils
Base Coats	Vulkem Primer #171	100 to 600 ft <sup>2</sup> /gal	
	Vulkem 191 Primer	400 to 450 ft <sup>2</sup> /gal	
	TREMprime Multi-Surface Urethane Primer	200 to 300 ft <sup>2</sup> /gal	
Top	Vulkem OC810	64 ft <sup>2</sup> /gal	25

## UNDER-TILE APPLICATIONS

Recommended two-coat system for tiles, pavers and bonded overburden.



Product Options		Coverage Rate	Wet Mils
Base	Vulkem 350NF	25 to 40 ft <sup>2</sup> /gal	40 to 60
Top	Tremco Epoxy Primer	133 to 160 ft <sup>2</sup> /gal	10 to 12

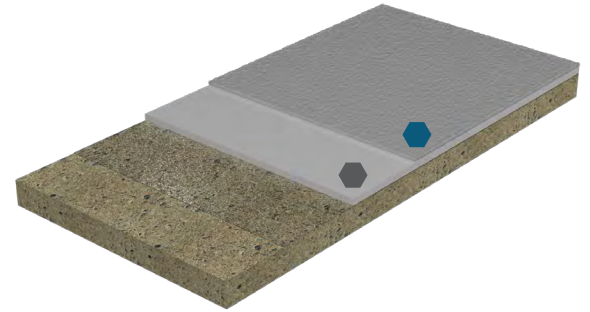
# SPECIALTY SYSTEMS

Waterproof coatings for a variety of specialty applications, including one-coat and rapid-cure solutions, as well as systems for under-tile applications, mechanical rooms and areas subject to heavy abrasion.

## MECHANICAL ROOM

Two-coat systems for mechanical rooms / work areas.

	Product Options	Coverage Rate	Wet Mils
Base Coats	Vulkem 350	40 to 64 ft <sup>2</sup> /gal	25 to 40
	Vulkem 350NF	64 ft <sup>2</sup> /gal	25 to 40
	Vulkem 360NF	64 ft <sup>2</sup> /gal	25 to 40
Top Coats	Vulkem 351	105 ft <sup>2</sup> /gal	15
	Vulkem 351NF	105 ft <sup>2</sup> /gal	15
	Vulkem 950NF	133 ft <sup>2</sup> /gal	12
	Vulkem 951NF	133 ft <sup>2</sup> /gal	12



### Typical Systems

**Standard:** 350NF / 351  
**Low VOC:** 350NF / 351NF  
**Low VOC, Quick-Cure:** 360NF / 950NF

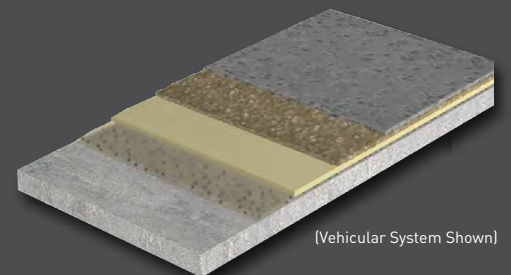
Contact your local Tremco Sales Representative to determine the highest-performing system based on regional needs.

## VULKEM® EWS WITH PUMA TECHNOLOGY FOR EXTREME-WEARING SYSTEMS

Recommended systems for areas subject to heavy abrasion, such as loading docks, dumpster storage areas, ticket splitters and helical ramps, including a variety of specialty applications.

Vulkem EWS Coating Systems with PUMA technology provide superior elongation over traditional MMA/PMMA technology systems. These rapid-curing systems feature extreme durability, fast cure independent of low temperatures, crack bridging, tenacious adhesion and superior abrasion resistance.

For complete details and Vulkem EWS System offerings, please refer to the PUMA Technology brochure available on our website, or request a copy from your local Tremco Sales Representative.



(Vehicular System Shown)



**tremcocpg.com**

