



# FLOORING

## Sikafloor® HIGH PERFORMANCE FLOOR & WALL SYSTEMS PRICE GUIDE

Effective July 2018

[www.SikaFloorUSA.com](http://www.SikaFloorUSA.com)

BUILDING TRUST





# TERMS AND CONDITIONS

## GENERAL

Prices, terms and conditions are subject to change without notice. Sika will invoice at price in effect at the time of shipment. Prices apply for sales within the USA. All prices are listed in US funds. Sales and use taxes are not included.

Minimum Order – \$1,000.00

Orders less than \$1,000.00 will be charged List Price.

Terms – Net 30 days, subject to credit approval. All prices F.O.B. Shipping Point.

Containers – All orders for one gallon, quarts, pints and kits will be shipped in case lots only.

## STOCKING LOCATIONS

Marion, OH, Santa Fe Springs, CA, Kansas City, MO, Sealy, TX, Monroe, NJ

## FREIGHT

Sika reserves the right to select a freight carrier. If you request a different carrier, we will honor your request when possible. You will be responsible for any freight charges or liabilities on shipments. We cannot guarantee discounted rates for specified carriers not under contract with Sika. A charge of \$10.00 per unit will be assessed for UPS and air freight shipments to cover additional packaging/handling costs.

## CUSTOMER PICKUP

Orders placed for customer pick-up must be picked up on scheduled ship date or order is subject to cancellation.

## BILLS OF LADING

All shipments will be shipped under a Sika Bill of Lading showing Sika as shipper.

## DAMAGED SHIPMENTS

All materials are in good condition when shipped. If containers are received in damaged condition, the carrier is responsible. In order to file a claim, you must either refuse to accept the merchandise or note on the bill of lading that the merchandise was received in damaged condition and that a claim will be filed.

## RETURN POLICY

1. We cannot accept any returns or deductions without prior written authorization and a returned goods code number.
2. To obtain authorization (RMA), you must call your Customer Service Representative with the original invoice number and batch numbers on the material being returned.
3. Returns must be in the original, unopened, undamaged shipping containers.
4. A request for an RMA must be made within 30 days of the billing invoice date and shipped freight prepaid.
5. Product must be returned within 30 days of the RMA date.
6. Only products authorized on the RMA are eligible for credit.
7. A 25% restocking charge fee will be deducted from the customer credit.
8. Sika will not accept returns of special order, non-stocking or made to order products.
9. Damaged goods will not be accepted by Sika receiving and will be returned to sender at their cost.

## CREDIT CARDS

Sika accepts Visa, MasterCard and American Express.

**EFFECTIVE DATE: July 1, 2018**

## CONTACT INFORMATION

Submit your orders via telephone: 800.933.7452 Option 4

Submit your orders via email: [flooring.orders@us.sika.com](mailto:flooring.orders@us.sika.com)

Visit our web site: [www.SikaFloorUSA.com](http://www.SikaFloorUSA.com)

# TABLE OF CONTENTS

## Sika Floor and Wall System Configurations

Sika ComfortFloor System	04
Sika ComfortFloor Decorative System	05
Sikafloor DecoDur Granite System	06
Sikafloor DecoFlake Single Broadcast System	07
Sikafloor DecoFlake UEF System	08
Sikafloor DecoFlake Fast Cure UV Stable System	09
Sikafloor Epo-Rok System	10
Sikafloor Conductive ESD System	11
Sikafloor Merflex Waterproofing Smooth System	12
Sikafloor Merflex Waterproofing Broadcast System	13
Sikafloor Metallic FX System	14
Sikafloor Morritex Self-Leveling Slurry Broadcast System	15
Sikafloor Morritex Broadcast System	16
Sikafloor Morritex Hangar System	17
Sikafloor PurCem 19NA System	18
Sikafloor PurCem 22NA System	19
Sikafloor PurCem 24NA System (Smooth)	19
Sikafloor PurCem 24NA System (Broadcast)	20
Sikafloor PurCem 29NA System	20
Sikafloor Quartzite Broadcast System	21
Sikafloor Quartzite HBD Heavy Duty Broadcast System	22
Sikafloor Moisture Vapor Treatment	23
Sikagard Descoglas FE Flexible Epoxy Wall System	24
Sikagard Descoglas RF Fiber Reinforced Epoxy Wall System	25
Sikagard Descoglas Fiberglass Mat Reinforced Wall System	26
Sikagard Hygiene UR Wall Coating System	27
Sikagard Hygiene HD Wall Coating System	27
Sikagard Hygiene High Build Wall System	28
Sikafloor Cove Base	29
<b>Sikafloor Resinous Floor Coatings</b>	<b>30 - 34</b>
<b>Sikafloor Polyurethane Cement Flooring</b>	<b>35 - 37</b>
<b>Sikafloor Chemical Resistant Floor Coatings</b>	<b>38</b>
<b>Sikafloor ESD Floor Coatings</b>	<b>39 - 40</b>
<b>Sikagard Wall Systems</b>	<b>41</b>
<b>Sikafloor Color Additives</b>	<b>42 - 44</b>
<b>Sikafloor Decorative Flake, Quartz &amp; Aggregate</b>	<b>45</b>
<b>Sikafloor Aggregates</b>	<b>46</b>
<b>Sika Repair &amp; Sloping Mortars</b>	<b>47</b>
<b>Sika FloorJoint-S</b>	<b>47</b>
<b>Sika ComfortFloor Pro Accessories</b>	<b>48</b>
<b>Sika Joint Sealants &amp; Repair</b>	<b>48</b>
<b>Sikafloor Color Cards</b>	<b>49 - 56</b>

# SIKAFLOOR SYSTEM CONFIGURATIONS

## Sika ComfortFloor System

Sikafloor ComfortFloor® is an ergonomic, sound dampening, low emission floor which is UV stable, aesthetically pleasing and easy to maintain while contributing to LEED certification. ComfortFloor® is a seamless, fluid applied urethane floor system comprised of 100% solids epoxy primer, pigmented self leveling urethane wear course and a wear resistant, pigmented water based urethane top coat.

Coating	Product Packaging	\$/Sq. Ft.	Approximate Square Foot Coverage per Kit	Recommended Thickness
<b>Primer</b>				
Sikafloor 161	4.5 gallon/15 gallon kit	0.36	900	8 mils
<b>Body Coat</b>				
Sikafloor 330 Pigmented	7.22 gallon kit	3.52	144	80 mils
Color Additive	Carton with 4 quarts	0.59	2 quarts per 7.22 gallon kit	
<b>Standard Top Coat</b>				
Sikafloor 304W	1.86 gallon kit	0.56	595	5 mils



# Sika ComfortFloor Decorative System

Sika ComfortFloor® Decorative comes with the same advantages of Sika ComfortFloor and is highly customizable with unlimited vinyl flake color options.

Coating	Product Packaging	\$/Sq. Ft.	Approximate Square Foot Coverage per Kit	Recommended Thickness
<b>Primer</b>				
Sikafloor 161	4.5 gallon	0.36	900	8 mils
<b>Receiver Coat</b>				
Sikafloor 330 Pigmented	7.22 gallon kit	3.52	144	80 mils
Color Additive	Carton with 4 quarts	0.59	2 quarts per 7.22 gallon kit	
<b>Color Sealer</b>				
Sikafloor 304W	1.86 gallon kit	0.56	595	5 mils
<b>Color Flakes</b>				
Decorative Flakes	50 pound case	0.72	333	Random
<b>Top Coat</b>				
Sikafloor 304W	1.86 gallon kit	0.56	595	5 mils
<b>2nd Sealer Coat (optional)</b>				
Sikafloor 304W	1.86 gallon kit	0.56	595	5 mils



# Sikafloor Decodur Granite

Sikafloor® DecoDur® is a decorative epoxy flooring system based on the innovative Sikafloor 218 DF, a two part, low odor, low viscosity epoxy resin, and Sikafloor Decodur Filler synthetic aggregate. It is self-leveling and highly UV resistant, making it an ideal system for almost any application requiring long term durability and premium appearance.

Coating	Product Packaging	\$/Sq. Ft.	Approximate Square Foot Coverage per Kit	Recommended Thickness
<b>Primer</b>				
Sikafloor 264	4.5 gallon	0.43	900	8 mils
<b>Screed Coat</b>				
Sikafloor 218 DF	4.5 gallon kit	2.44	160	80 mils
<b>Color Aggregate</b>				
DecoDur Aggregate (see page 55 for colors)	(2) 35 pound bags	3.00	160	
<b>Top Coat</b>				
Sikafloor 304W	1.86 gallon kit	0.56	595	5 mils
<b>Alternate Seal Coat when greater chemical resistance is required</b>				
Sikafloor 315N	6 gallon kit	0.61	2,400	4 mils



# Sikafloor DecoFlake Single Broadcast System

Sikafloor DecoFlake is an aesthetic, easy to clean, seamless floor consisting of a clear epoxy binder broadcast with multi-colored vinyl chips and sealed with transparent or UV stable topcoats. The system is highly customizable with an extensive color palette and variable application thicknesses. Final surface options include: integral covebase and variable surface texture to produce a range of slip-resistant finishes.

Coating	Product Packaging	\$/Sq. Ft.	Approximate Square Foot Coverage per Kit	Recommended Thickness
<b>Primer</b>				
Sikafloor 161	4.5 gallon	0.36	900	8 mils
<b>Receiver Coat</b>				
Sikafloor 264	4.5 gallon kit	0.53	720	10 mils
Broadcast Vinyl Flake to Rejection	50 pound box	0.72	333 per box	0.15 lbs/sq. ft.
<b>Standard Top Coat</b>				
Sikafloor 217	15 gallon kit	0.48	2,400	10 mils
<b>Alternate Receiver Coat when Sikafloor 510N LPL is used as a Top Coat or when greater UV resistance and faster cure times are required</b>				
Sikafloor 510N LPL	8.33 gallon kit	1.41	888	15 mils
<b>Alternate Receiver Coat when Sikafloor 225N is used as a Top Coat or when greater UV resistance is required</b>				
Sikafloor 225N	15 gallon kit	1.25	1,500	16 mils
<b>Alternate Receiver Coat when Sikafloor 510N LPL is used as a Receiver Coat or when greater UV resistance and faster cure times are required</b>				
Sikafloor 510N LPL	8.33 gallon kit	1.41	888	15 mils
<b>Alternate Sealer Coat when Sikafloor 225N is used as a Receiver Coat or when greater UV resistance is required</b>				
Sikafloor 225N	15 gallon kit	1.25	1,500	16 mils
<b>Alternate Seal Coat when gloss reduction or satin finish is required</b>				
Sikafloor 304W	1.86 gallon kit	0.56	595	5 mils
<b>Alternate Seal Coat when greater chemical resistance is required</b>				
Sikafloor 315N	6 gallon kit	0.61	2,400	4 mils
<b>Alternate Seal Coat when greater chemical resistance is required</b>				
Sikafloor 340	15 gallon kit	0.27	6000	4 mils



# Sikafloor DecoFlake UEF System

Sikafloor Decoflake UEF can be used to significantly accelerate the installation schedule on fast-track projects. The self-leveling polyurethane cement base with broadcast and solid color seal coat can be installed as soon as the concrete can be shot-blasted and used as a work surface throughout the heavy trade and build out portion of the project. Once the heavy trades are finished the floor is cleaned and prepared, followed by the cove base and decorative flake finish installation.

Coating	Product Packaging	\$/Sq. Ft.	Approximate Square Foot Coverage per Kit	Recommended Thickness
<b>Primer</b>				
Substrate priming is not required under typical circumstances. Substrate porosity/conditions determine if primer/scratch coat is required.				
<b>Moisture Tolerant Body Coat</b>				
Sikafloor 22NA PurCem	1.7 gallon kit	4.14	31	160 mils
<b>Body Coat</b>				
Sikafloor 264	4.5 gallon kit	0.53	720	10 mils
Broadcast Vinyl Flake to Rejection	50 pound box	0.72	333 per box	0.15 lbs/sq. ft.
<b>Optional Top Coat</b>				
Sikafloor 225N	15 gallon kit	1.25	1,500	16 mils
<b>Finish Coat</b>				
Sikafloor 315N	6 gallon kit	0.61	1,500	4 mils



# Sikafloor DecoFlake Fast Cure UV Stable System

Sikafloor Decoflake Fast Cure UV Stable System is a single broadcast vinyl flake system consisting of a combination of high solids epoxy and decorative vinyl flakes. The system produces a decorative, easy to install and maintain, seamless floor with excellent durability and chemical resistance.

Coating	Product Packaging	\$/Sq. Ft.	Approximate Square Foot Coverage per Kit	Recommended Thickness
<b>Primer</b>				
Sikafloor 161	4.5 gallon kit	0.36	900	8 mils
<b>Receiver Coat</b>				
Sikafloor 510N LPL	8.33 gallon kit	1.41	888	15 mils
Broadcast Vinyl Flake to Rejection	50 pound box	0.72	333 per box	0.15 lbs/sq. ft.
<b>Top Coat</b>				
Sikafloor 510N LPL	8.33 gallon kit	1.41	888	15 mils
<b>Optional Top Coat for greater chemical resistance</b>				
Sikafloor 315N	6 gallon kit	0.61	1,500	4 mils
<b>Alternate Seal Coat when gloss reduction or satin finish is required</b>				
Sikafloor 304W	1.86 gallon kit	0.56	595	5 mils



# Sikafloor Epo-Rok System

These heavy duty systems deliver superior performance when overlaying new concrete or patching/overlaying a severely eroded concrete floor. It provides chemical, abrasion and impact resistance with compressive strengths two to three times greater than concrete. Epo-Rok flooring systems are fully color and texture customizable and are available in a wide range of chemical, abrasion and impact resistances.

Coating	Product Packaging	\$/Sq. Ft.	Approximate Square Foot Coverage per Kit	Recommended Thickness
<b>Primer</b>				
Sikafloor 160	15 gallon kit	0.35	3000	8 mils
<b>Epoxy Mortar</b>				
Sikafloor 160	15 gallon kit	2.21	480	1/4"
Sikadur 506	50 pound bag (20 bags required per kit)	0.68	480	1/4".
<b>Grout Coat</b>				
Sikafloor 264 Thixo Lite	4.5 gallon kit	0.50	900	8 mils
<b>Standard Top Coat</b>				
Sikafloor 264 Thixo Lite	4.5 gallon kit	0.50	900	8 mils
<b>Alternate Top Coat for smooth finish</b>				
Sikafloor 264	4.5 gallon kit	0.43	900	8 mils
<b>Additional Seal Coat when satin finish or gloss reduction is required</b>				
Sikafloor 304W	1.86 gallon kit	0.56	595	5 mils
<b>Additional Seal Coat when a greater chemical resistance or gloss reduction is required</b>				
Sikafloor 315N CP	6 gallon kit	0.61	2,400	4 mils
Color Additive	Carton with 4 quarts	0.05	1 quart per 2.67 gallons	



# Sikafloor Conductive ESD System

In industries where electronic components or volatile chemicals are involved, static electricity can result in significant damage, injury and financial loss. Protect your work environment against electrostatic discharge with Sikafloor® ESD Control Flooring Systems.

Sikafloor® ESD Conductive Electrostatic Control Epoxy System consists of Sikafloor 220W Conductive Primer and Sikafloor 200C ESD: Meets low resistance requirements for NFPA 77 and other hazardous applications - ( $2.5 \times 10^4$  to  $1.0 \times 10^6$  ohms) per ANSI/ESD S7.1/ASTM F-150. Meets product requirements for ANSI S20.20 2014.

Coating	Product Packaging	\$/Sq. Ft.	Approximate Square Foot Coverage per Kit	Recommended Thickness
<b>Primer</b>				
Sikafloor 161	4.5 gallon kit	0.36	900	8 mils
<b>Conductive Black Primer</b>				
Sikafloor 220W	1.4 gallon kit	0.39	570	4 mils
<b>Standard Top Coat</b>				
Sikafloor 200C ESD	3.31 gallon kit	3.27	356	16 mils

## Chemically Resistant Sikafloor ESD System Build Up

<b>Primer</b>				
Sikafloor 161	4.5 gallon kit	0.36	900	8 mils
<b>Conductive Black Primer</b>				
Sikafloor 222W	1.5 gallon kit	0.40	600	4 mils
<b>Top Coat for greater chemical resistance</b>				
Sikafloor 270 ESD	4.5 gallon kit	5.16	450	16 mils



# Sikafloor Merflex Waterproofing Smooth System

Sikafloor Merflex is a monolithic, flexible, and abrasion resistant smooth flooring system that is designed for areas requiring a combined water protection membrane and wearing surface. The system is typically used in mechanical rooms, computer rooms and other areas requiring waterproofing while providing flexibility and crack-bridging. Sikafloor Merflex meets ANSI 118.10 as a waterproofing membrane.

Coating	Product Packaging	\$/Sq. Ft.	Approximate Square Foot Coverage per Kit	Recommended Thickness
<b>Primer (optional)</b>				
Sikafloor 161	4.5 gallon kit	0.36	900	8 mils
<b>1st Neat Coat</b>				
Sikafloor 265 mils	10 gallon kit	1.38	800	20
Epoxy Color Additive	Carton with 4 quarts	0.11	1 quart per 5 gallons	
<b>2nd Neat Coat</b>				
Sikafloor 265 mils	10 gallon kit	1.38	800	20
Color Additive	Carton with 4 quarts	0.11	1 quart per 5 gallons	
<b>Standard Top Coat</b>				
Sikafloor 264	4.5 gallon kit	0.53	720	10 mils
<b>Alternate Top Coat for fast return to service</b>				
Sikafloor 510N LPL	8.33 gallon kit	1.41	888	15 mils
<b>Alternate Seal Coat for greater chemical resistance</b>				
Sikafloor 315N CP	6 gallon kit	0.61	2,400	4 mils
Color Additive	Carton with 4 quarts	0.05	1 quart per 2.75 gallons	
<b>Alternate Seal Coat when gloss retention is required</b>				
Sikafloor 340	5 gallon kit	0.57	1,100	4 mils
Color Additive	Carton with 4 quarts	0.09	1 quart per 2.5 gallons	



# Sikafloor Merflex Waterproofing Broadcast System

Sikafloor Merflex Broadcast is a monolithic, flexible, abrasion and slip resistant flooring system that is designed for areas requiring a combined water protection membrane and higher traffic wearing surface. The incorporation of broadcast aggregate provides a non-slip finish for applications such as walkways or areas of spillage.

Coating	Product Packaging	\$/Sq. Ft.	Approximate Square Foot Coverage per Kit	Recommended Thickness
<b>Primer (optional)</b>				
Sikafloor 161	4.5 gallon kit	0.36	900	8 mils
<b>1st Neat Coat</b>				
Sikafloor 265	10 gallon kit	1.38	800	20 mils
Color Additive	Carton with 4 quarts	0.11	1 quart per 5 gallons	
<b>Receiver Coat</b>				
Sikafloor 265	10 gallon kit	1.38	800	20 mils
Color Additive	Carton with 4 quarts	0.11	1 quart per 5 gallons	
Sikadur Broadcast Aggregate to Rejection	50 pound bag	0.16	100/bag	0.5 lb./ sq. ft.
<b>Standard Top Coat</b>				
Sikafloor 264	4.5 gallon kit	0.53	720	10 mils
<b>Alternate Top Coat for fast return to service</b>				
Sikafloor 510N LPL	8.33 gallon kit	1.41	888	15 mils
<b>Alternate Seal Coat for greater chemical resistance</b>				
Sikafloor 315N CP	6 gallon kit	0.61	2,400	4 mils
Color Additive	Carton with 4 quarts	0.05	1 quart per 2.75 gallons	
<b>Alternate Seal Coat when gloss retention is required</b>				
Sikafloor 340	5 gallon kit	0.57	1,100	4 mils
Color Additive	Carton with 4 quarts	0.09	1 quart per 2.5 gallons	



# Sikafloor Metallic FX

Creating eye-catching, architecturally impactful designs just became easier with Sikafloor Metallic FX, a high aesthetics, self-leveling flooring system destined to generate striking first impressions. Metallic FX's multi-dimensional, pearlescent designs bring depth and life to lobbies, retail areas, museums and other high visibility spaces. Sikafloor Metallic FX uses ultra-fine Sika Metallic Powders to deliver stunning dimension to public areas.

Coating	Product Packaging	\$/Sq. Ft.	Approximate Square Foot Coverage per Kit	Recommended Thickness
<b>Primer</b>				
Sikafloor 264	4.5 gallon kit	0.43	900	8 mils
<b>Body Coat</b>				
Sikafloor 217	4.5 gallon kit	0.41	450	16 mils
Color Additive (see page 54 for colors)	12 ounce container	0.13	1 container per 4.5 gallon kit	
<b>Standard Top Coat</b>				
Sikafloor 315N	6 gallon kit	0.61	2,400	4 mils
<b>Optional Top Coat for matte finish</b>				
Sikafloor 304W	1.85 gallon kit	0.56	595	5 mils



# Sikafloor Morritex Self-Leveling Slurry Broadcast System

Solid color, textured, resin rich, aggregate extended, seamless epoxy based flooring. The incorporation of durable, fine aggregate into the matrix during mixing significantly increases the liquid resin volume during application without sacrificing physical properties. This reduces the overall neat resin cost associated with thicker self-leveling coatings and maximizes resin economy allowing thicker applications that ultimately extend the coatings service life against aggressive wear.

Coating	Product Packaging	\$/Sq. Ft.	Approximate Square Foot Coverage per Kit	Recommended Thickness
<b>Primer</b>				
Sikafloor 161	4.5 gallon kit	0.36	900	8 mils
<b>Slurry Receiver Coat</b>				
Sikafloor 264	4.5 gallon kit	2.36	162	60 mils
Sikadur 504 Slurry Aggregate	50 pound bag	0.05	324 sq. ft.per bag	60 mils
Sikadur Broadcast Type Aggregate to Refusal	50 pound bag	0.10	100 sq. ft.per bag	0.5 lbs/sq. ft.
<b>Standard Top Coat</b>				
Sikafloor 264	4.5 gallon kit	0.85	450	16 mils
<b>Alternate Top Coat for fast return to service</b>				
Sikafloor 510N LPL	8.33 gallon kit	1.41	888	15 mils
<b>Alternate Seal Coat for greater chemical resistance</b>				
Sikafloor 315 N CP	6 gallon kit	0.61	2,400	4 mils
Color Additive	Carton with 4 quarts	0.05	1 quart per 2.75 gallons	
<b>Alternate Seal Coat when gloss retention is required</b>				
Sikafloor 340	5 gallon kit	0.57	1,100	4 mils
Color Additive	Carton with 4 quarts	0.09	1 quart per 2.5 gallons	





# Sikafloor Morritex Broadcast System

Sikafloor Morritex Broadcast System is a solid color, textured, resin-rich, aggregate-filled, seamless, epoxy-based floor coating. The incorporation of aggregate, broadcast and sealed into the surface economically increase coating thickness and also extend life expectancy by preventing wear.

Coating	Product Packaging	\$/Sq. Ft.	Approximate Square Foot Coverage per Kit	Recommended Thickness
<b>Primer</b>				
Sikafloor 161	4.5 gallon kit	0.36	900	8 mils
<b>Receiver Coat</b>				
Sikafloor 264	4.5 gallon kit	2.36	162	60 mils
Sikadur Broadcast Type Aggregate to Refusal	50 pound bag	0.10	100 sq. ft. per bag	0.5 lbs/sq. ft.
<b>Standard Top Coat</b>				
Sikafloor 264	4.5 gallon kit	0.85	450	16 mils
<b>Alternate Top Coat for fast return to service</b>				
Sikafloor 510N LPL	8.33 gallon kit	1.41	888	15 mils
<b>Alternate Seal Coat for greater chemical resistance</b>				
Sikafloor 315 N CP	6 gallon kit	0.61	2,400	4 mils
Color Additive	Carton with 4 quarts	0.05	1 quart per 2.75 gallons	
<b>Alternate Seal Coat when gloss retention is required</b>				
Sikafloor 340	5 gallon kit	0.57	1,100	4 mils
Color Additive	Carton with 4 quarts	0.09	1 quart per 2.5 gallons	



# Sikafloor Morritex Hangar System

Sikafloor Morritex Hangar System is a monolithic solid color flooring system with superior chemical resistance that has been specifically designed for airplane hangars and aviation environments. This system resists typical aviation fluids such as Jet-A and Skydrol.

Coating	Product Packaging	\$/Sq. Ft.	Approximate Square Foot Coverage per Kit	Recommended Thickness
<b>Primer</b>				
Sikafloor 161	4.5 gallon kit	0.36	900	8 mils
<b>Neat Coat</b>				
Sikafloor 264	4.5 gallon kit	0.64	600	12 mils
<b>1st Seal Coat</b>				
Sikafloor 340	5 gallon kit	0.57	1,100	4 mils
Color Additive	Carton with 4 quarts	0.09	1 quart per 2.5 gallons	
<b>2nd Seal Coat</b>				
Sikafloor 340	5 gallon kit	0.57	1,100	4 mils
Color Additive	Carton with 4 quarts	0.09	1 quart per 2.5 gallons	

## Alternative Seal Coats for Low VOC Hangar System

### Alternative 1st Seal Coat

Sikafloor 315 N CP	6 gallon kit	0.61	2,000	4 mils
Color Additive	Carton with 4 quarts	0.05	1 quart per 2.75 gallons	

### Alternate Seal Coat for greater chemical resistance

Sikafloor 315 N CP	6 gallon kit	0.61	2,400	4 mils
Color Additive	Carton with 4 quarts	0.05	1 quart per 2.75 gallons	



# Sikafloor 19NA PurCem

Sikafloor 19NA PurCem® is a trowel grade, heavy duty, solid color, three component, water dispersed polyurethane-based cement and aggregate screed designed to provide excellent resistance to abrasion, impact, chemical attack and other physical aggression. Sikafloor 19NA PurCem® has a textured aggregate surface providing moderate slip resistance.

Coating	Product Packaging	\$/Sq. Ft.	Approximate Square Foot Coverage per Kit	Recommended Thickness
---------	-------------------	------------	--	-----------------------

### Primer

Substrate priming is not required under typical circumstances. Substrate porosity/conditions determine if primer/scratch coat is required.

### Trowelled Mortar

Sikafloor PurCem 19NA (see page 56 for colors)	97 pounds per kit	4.86	31 20	1/4 " 3/8"
---	-------------------	------	----------	---------------

### Optional Broadcast for Additional Slip Resistance

Sikadur Broadcast to Rejection	50 pound bag	0.16	100/bag	0.5 lb./ sq. ft. Aggregate
-----------------------------------	--------------	------	---------	----------------------------

### Optional Top Coat for use with Aggregate

Sikafloor PurCem 31NA	24.33 pounds per kit	0.65	224	15 mills
-----------------------	----------------------	------	-----	----------



## Sikafloor 22NA PurCem

Sikafloor 22NA PurCem® is a self-leveling, medium to heavy duty, solid color, three-component, water dispersed polyurethane-based cement and aggregate screed. It is designed to provide excellent resistance to abrasion, impact, chemical attack and other physical aggression. Sikafloor 22NA PurCem® is broadcast with quartz aggregate to increase surface texture and slip resistance and typically sealed with Sikafloor 31NA PurCem®

Coating	Product Packaging	\$/Sq. Ft.	Approximate Square Foot Coverage per Kit	Recommended Thickness
<b>Primer</b>				
Substrate priming is not required under typical circumstances. Substrate porosity/conditions determine if primer/scratch coat is required.				
<b>Self-Leveling Mortar</b>				
Sikafloor PurCem 22NA (see page 56 for colors)	59.73 pounds per kit	4.14	31	3/16 "
Sikadur Broadcast to Rejection	50 pound bag	0.16	100/bag	0.5 lb./ sq. ft. Aggregate
<b>Sealer Coat</b>				
Sikafloor PurCem 31NA	24.33 pounds per kit	0.87	168	20 mils
<b>Alternate Top Coat for fast return to service</b>				
Sikafloor 510N LPL	8.33 gallon kit	1.41	888	15 mils

## Sikafloor 24NA PurCem

Sikafloor-24NA PurCem is a state of the art, medium duty, phthalate-free, water dispersed polyurethane based cement and aggregate screed, applicable at thicknesses ranging from 80 to 160 mils (2 to 4 mm). It is designed to be installed as a self-levelling floor topping that provides an easy-to-clean, smooth surface with medium slip resistance values and is typically used for general industrial applications. Sikafloor-24 NA PurCem represents superior polyurethane cement technology, combining easier application, resistance to blistering and improved performance.

### 24NA PurCem Smooth

Coating	Product Packaging	\$/Sq. Ft.	Approximate Square Foot Coverage per Kit	Recommended Thickness
<b>Primer</b>				
Sikafloor 31NA PurCem	25 pound kit	0.40	368	10 mils
<b>Optional Scratch Coat</b>				
Sikafloor PurCem 24NA	55.7 pounds per kit	1.18	215	40 mils
<b>Screed</b>				
Sikafloor PurCem 24NA	55.7 pounds per kit	4.71- 2.34	53 - 107	80 - 160 mils

# Sikafloor 24NA PurCem

## 24NA PurCem Broadcast

Coating	Product Packaging	\$/Sq. Ft.	Approximate Square Foot Coverage per Kit	Recommended Thickness
<b>Self-Leveling Screed</b>				
Sikafloor PurCem 24NA	55.7 pounds per kit	2.37	107	80 mils
		2.99	85	100 mils
		3.58	71	120 mils
<b>Broadcast Aggregate</b>				
Sikadur Broadcast Aggregate	50 pound bag	0.16	100/bag	0.5 lbs./sq. ft.
<b>Sealer Coat</b>				
Sikafloor PurCem 31NA	25 pounds per kit	0.87	168	20 mils
<b>Alternate Top Coat for fast return to service</b>				
Sikafloor 510N LPL	8.33 gallon kit	1.41	888	15 mils

# Sikafloor 29NA PurCem Cove Base

Sikafloor 29NA PurCem® is a vertical grade, three-component, solid color, water dispersed polyurethanebased cement and aggregate mortar used for detailing work and coving. It has a finely textured smooth aggregate appearance that provides excellent resistance to abrasion, impact, chemical attack and other physical aggression.

Coating	Product Packaging	\$/Ln. Ft.	Approximate Square Foot Coverage per Kit	Recommended Thickness
<b>Primer</b>				
Substrate priming is not required under typical circumstances. Substrate porosity/conditions determine if primer/scratch coat is required.				
<b>Detailing Mortar</b>				
Sikafloor PurCem 29NA	55.7 pounds per kit	3.51	@ 1/8" thick & 1" Radius	1/8"
		4.22	4" Height: 30 linear feet 6" Height: 25 linear feet	
<b>Sealer Coat</b>				
Sikafloor PurCem 31NA	24.33 pounds per kit	0.87	168	20 mils

# Sikafloor Quartzite Broadcast System

Sikafloor® Quartzite® Broadcast System is a seamless, aesthetic, broadcast and sealed epoxy floor composed of multicolored quartz aggregate finished with transparent top coats. The system provides a durable, impermeable, lightly textured, slip resistant finish with superior mechanical and good chemical resistance.

Coating	Product Packaging	\$/Sq. Ft.	Approximate Square Foot Coverage per Kit	Recommended Thickness
<b>Primer</b>				
Sikafloor 161	4.5 gallon kit	0.36	900	8 mils
<b>1st Receiver Coat</b>				
Sikafloor 217	15 gallon kit	0.58	2000	12 mils
Broadcast Colored Quartz to Rejection	50 pound bag	0.16	100/bag	0.5 lb./ sq. ft.
<b>2nd Receiver Coat</b>				
Sikafloor 217	15 gallon kit	0.58	2000	12 mils
Broadcast Colored Quartz to Rejection	50 pound bag	0.42	100/bag	0.5 lb./ sq. ft.
<b>Standard Top Coat</b>				
Sikafloor 217	15 gallon kit	0.77	1500	16 mils
<b>Alternate Receiver and Top Coat for great UV resistance</b>				
Sikafloor 225N	15 gallon kit	1.25	1,500	16 mils
Sikafloor 510N LPL	8.33 gallon kit	1.41	888	15 mils
<b>Alternate Seal Coat when gloss retention is required</b>				
Sikafloor 304W	1.86 gallon kit	0.56	595	5 mils
<b>Alternate Seal Coat for greater chemical resistance</b>				
Sikafloor 315N	3 gallon kit	0.61	2,400	4 mils
<b>Alternate Seal Coat when gloss retention is required</b>				
Sikafloor 340	15 gallon kit	0.27	6000	4 mils



# Sikafloor Quartzite HDB Heavy Duty Broadcast System

Sikafloor® Quartzite® HDB System is a decorative, two-layer epoxy floor system. The first layer is a heavy duty epoxy screed used to re-profile rough or deteriorated concrete surfaces or to create thin-set slope changes in certain areas in order to provide positive slope to drain.

The second layer is composed of multicolored quartz aggregate finished with transparent top coats to produce a seamless and aesthetic finish.

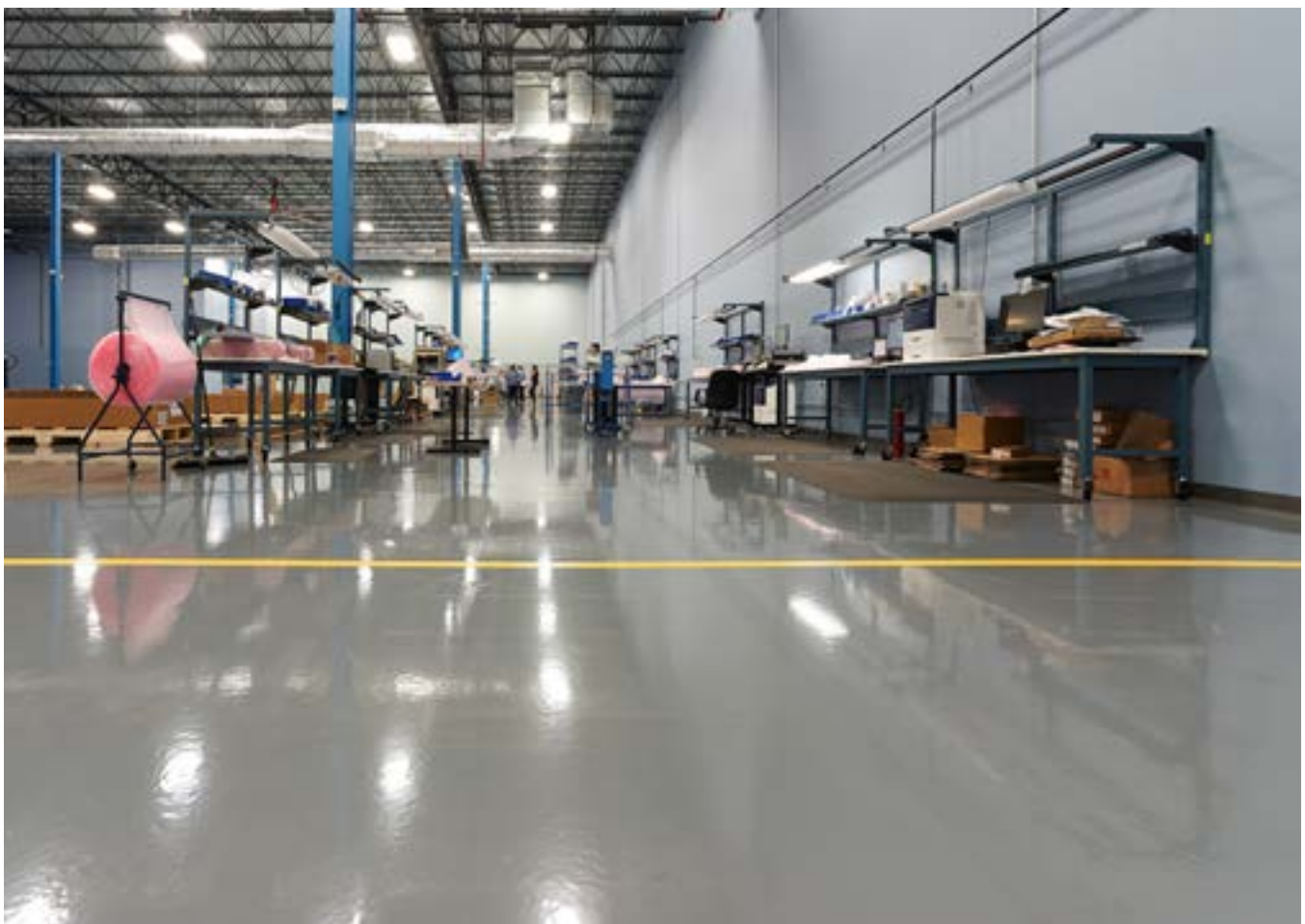
Coating	Product Packaging	\$/Sq. Ft.	Approximate Square Foot Coverage per Kit	Recommended Thickness
<b>Primer</b>				
Sikafloor 161	4.5 gallon kit	0.36	900	8 mils
<b>Epoxy Mortar</b>				
Sikafloor 160	15 gallon kit	1.11	960	1/8"
Sikafdur 506	50 pound bag (20 bags required per kit)	0.34	960	
<b>Grout Coat</b>				
Sikafloor 264 Thixo Lite	4.5 gallon kit	0.50	900	8 mils
<b>Receiver Coat</b>				
Sikafloor 217	15 gallon kit	0.58	2000	12 mils
Broadcast Colored Quartz to Rejection	50 pound bag	0.42	100/bag	0.5 lb./ sq. ft.
<b>Standard Top Coat</b>				
Sikafloor 217	15 gallon kit	0.77	1500	16 mils
<b>Alternate Top Coat for great UV resistance</b>				
Sikafloor 225N	15 gallon kit	1.25	1500	16 mils
<b>Additional Seal Coat for gloss reduction and satin finish</b>				
Sikafloor 304W	1.86 gallon kit	0.56	595	5 mils
<b>Additional Seal Coat for greater chemical resistance</b>				
Sikafloor 315N	6 gallon kit	0.61	2,400	4 mils
<b>Additional Seal Coat for greater chemical resistance</b>				
Sikafloor 340	15 gallon kit	0.27	6000	4 mils

# Sikafloor Moisture Vapor Treatment

## Sikafloor 1610

Sikafloor 1610 is a translucent red moisture tolerant primer for Sikafloor epoxy and urethane coatings, as well as broadcast and troweled systems. Sikafloor 1610 should be considered where  $\leq 6\%$  mass (pbw – part by weight) is measured on a concrete substrate with Tramex<sup>®</sup> CME/CMExpert type concrete moisture meter.

Coating	Product Packaging	\$/Sq. Ft.	Approximate Square Foot Coverage per Kit	Recommended Thickness
<b>1st Primer Coat</b>				
Sikafloor 1610	4.5 gallon kit	0.72	900	8 mils
<b>2nd Primer Coat</b>				
Sikafloor 1610	4.5 gallon kit	0.72	900	8 mils





# Sikagard Wall Systems

## Sikagard Descoglas FE Flexible Epoxy Wall System

Sikagard Descoglas FE is a flexible epoxy-based wall system designed for optimal impact resistance and crack isolation. It is often used as wainscot in high impact prone zones. It is LEED compliant and suitable for FDA inspected facilities.

Coating	Product Packaging	\$/Sq. Ft.	Approximate Square Foot Coverage per Kit	Recommended Thickness
<b>Primer Coat</b>				
Sika Bonding Primer	1 gallon kit	0.39 - 0.26	200 - 300	5 - 8 mils
<b>Base Coat</b>				
Sikafloor 265	10 gallon kit	0.69	1600	10 mils
Epoxy Color Additive	Carton with 4 quarts	0.06	1 quart per 5 gallons	
<b>Base Coat</b>				
Sikafloor 265 mil-	10 gallon kit	0.69	1600	10
Epoxy Color Additive	Carton with 4 quarts	0.06	1 quart per 3 gallons	
<b>Top Coat</b>				
Sikagard 307W	5 gallon kit	0.20	2000	4 mils
<b>Additional Top Coat</b>				
Sikagard 307W	5 gallon kit	0.20	2000	4 mils
<b>Alternate Top Coat for 100% solids epoxy</b>				
Sikafloor 217 Thixo w/pigment	4.5 gallon kit	0.24	1800	4 mils
<b>Alternate Top Coat for greater chemical resistance</b>				
Sikafloor 315N	6 gallon kit	0.61	2400	4 mils
<b>Alternate Top Coat for rapid return to service</b>				
Sikafloor 510N LPL	8.33 gallon kit	0.47	2656	5 mils
<b>Alternate Top Coat for greater chemical resistance</b>				
Sikafloor 340	15 gallon kit	0.27	6000	4 mils
<b>Alternate Top Coat for water-based urethane</b>				
Sikafloor 422	7.6 gallon kit	0.29	3,040	4 mils

# Sikagard Descoglas RF Fiber Reinforced Epoxy Wall System

Sikagard Descoglas RF is a high build, high solids fiber reinforced epoxy wall system that uses a fiberglass and filler package to enhance chemical and thermal shock resistance. It is typically used in moderate to high abuse areas in new construction or renovation projects. It is LEED compliant and is suited to FDA inspected facilities.

Coating	Product Packaging	\$/Sq. Ft.	Approximate Square Foot Coverage per Kit	Recommended Thickness
<b>Primer Coat</b>				
Sika Bonding Primer	1 gallon kit	0.39 - 0.26	200 - 300	5 - 8 mils
<b>Base Coat</b>				
Sikagard 215	5.25 gallon kit	0.49	1050	8 mils
<b>Base Coat</b>				
Sikagard 215	5.25 gallon kit	0.49	1050	8 mils
<b>Top Coat</b>				
Sikagard 307W	5 gallon kit	0.20	2000	4 mils
<b>Additional Top Coat</b>				
Sikagard 307W	5 gallon kit	0.20	2000	4 mils
<b>Alternate Top Coat for 100% solids epoxy</b>				
Sikafloor 217 Thixo w/pigment	4.5 gallon kit	0.24	1800	4 mils
<b>Alternate Top Coat for greater chemical resistance</b>				
Sikafloor 315N CP	6 gallon kit	0.61	2400	4 mils
Color Additive	Carton with 4 quarts	0.05	1 quart per 2.75 gallons	
<b>Alternate Top Coat for rapid return to service</b>				
Sikafloor 510N LPL	8.33 gallon kit	0.47	2656	5 mils
<b>Alternate Top Coat for greater chemical resistance</b>				
Sikafloor 340	15 gallon kit	0.27	6000	4 mils
<b>Alternate Top Coat for water-based urethane</b>				
Sikafloor 422	7.6 gallon kit	0.29	3,040	4 mils

# Sikagard Descoglas RM Fiberglass Mat Reinforced Wall System

Sikagard Descoglas RM has over 30 years of performance history in the most demanding environments. It has become the industry standard for fiberglass mat reinforced systems. It has maximum thermal shock resistance for an epoxy coating system when specified with a 5.94 ounce woven roving mat. It is LEED compliant and is suited for FDA inspected facilities.

Coating	Product Packaging	\$/Sq. Ft.	Approximate Square Foot Coverage per Kit	Recommended Thickness
<b>Primer Coat</b>				
Sika Bonding Primer	1 gallon kit	0.39 - 0.26	200 - 300	5 - 8 mils
<b>Base Coat</b>				
Sikagard 215	5.25 gallon kit	0.79	650	8 mils
<b>Fiberglass Mat</b>				
Hexcel 1528 Fiberglass Fabric with F81 Coating			5.94 oz.	
<b>Saturant Coat</b>				
Sikagard 215	5.25 gallon kit	0.83	620	8 mils
<b>Base Coat</b>				
Sikagard 215	5.25 gallon kit	0.99	520	10 mils
<b>Top Coat</b>				
Sikagard 307W	5 gallon kit	0.20	2000	4 mils
<b>Additional Top Coat</b>				
Sikagard 307W	5 gallon kit	0.20	2000	4 mils
<b>Alternate Top Coat for 100% solids epoxy</b>				
Sikafloor 217 Thixo w/pigment	4.5 gallon kit	0.24	1800	4 mils
<b>Alternate Top Coat for greater chemical resistance</b>				
Sikafloor 315N	6 gallon kit	0.81	2400	4 mils
<b>Alternate Top Coat for rapid return to service</b>				
Sikafloor 510N LPL	8.33 gallon kit	0.47	2656	5 mils
<b>Alternate Top Coat for greater chemical resistance</b>				
Sikafloor 340	15 gallon kit	0.27	6000	4 mils
<b>Alternate Top Coat for water-based urethane</b>				
Sikafloor 422	7.6 gallon kit	0.29	3,040	4 mils

## Sikagard Hygiene UR Coating System

Sikagard Hygiene UR coating system is a one component, water based, aliphatic urethane coating designed for use over primed substrates, hybrid acrylic or high solids epoxy systems. It provides a color stable, chemical and sanitizer resistant finish. It adheres to properly prepared, compatible existing coatings making it an excellent maintenance finish. Sikagard UR outperforms water-based epoxy coatings in sanitized environments. Sikagard Hygiene UR's long pot life and rapid cure time allows for application of two coats within an hour of each other.

Coating	Product Packaging	\$/Sq. Ft.	Approximate Square Foot Coverage per Kit	Recommended Thickness
<b>Primer Coat</b>				
Sikagard 307W	5 gallon kit	0.20	2000	4 mils
<b>Base Coat</b>				
Sikagard 307W	5 gallon kit	0.20	2000	4 mils
<b>Top Coat</b>				
Sikagard 307W	5 gallon kit	0.20	2000	4 mils

## Sikagard Hygiene HD Coating System

Sikagard Hygiene HD coating system is a single component, water based, high build, high performance, low sheen hybrid acrylic coating system. It has excellent flexibility for crack isolation and blunt object impact resistance. Sikagard Hygiene HD has excellent chemical and sanitizer resistance and superior color stability. It may be applied by either roller or spray, which allows for the optimal application method based on a facility's unique needs and environment.

Coating	Product Packaging	\$/Sq. Ft.	Approximate Square Foot Coverage per Kit	Recommended Thickness
<b>Primer Coat</b>				
Sika Bonding Primer	1 gallon kit	0.39 - 0.26	200 - 300	5 - 8 mils
<b>Body Coat</b>				
Sikagard 203W	5 gallon kit	0.41	727	11 mils
<b>Top Coat</b>				
Sikagard 203W	5 gallon kit	0.41	727	11 mils

**Optional Reinforcement Mat for greater impact and thermal shock resistance**

**Reemat - Please consult Sika Flooring Customer Service for current pricing**

# Sikagard Hygiene High Build Wall Systems

Roller Applied

Coating	Product Packaging	\$/Sq. Ft.	Approximate Square Foot Coverage per Kit	Recommended Thickness
<b>Primer Coat</b>				
Sika Bonding Primer	1 gallon kit	0.39 - 0.26	200 - 300	5 - 8 mils
<b>Body Coat</b>				
Sikagard 203W	5 gallon kit	0.41	727	11 mils
<b>Top Coat</b>				
Sikagard 203W	5 gallon kit	0.41	727	11 mils
<b>Alternate Top Coat for high gloss finish</b>				
Sikagard 307W	5 gallon kit	0.20	2000	4 mils
Sikagard 307W	5 gallon kit	0.20	2000	4 mils

Spray Applied

Coating	Product Packaging	\$/Sq. Ft.	Approximate Square Foot Coverage per Kit	Recommended Thickness
<b>Primer Coat</b>				
Sika Bonding Primer	1 gallon kit	0.39 - 0.26	200 - 300	5 - 8 mils
<b>Body Coat</b>				
Sikagard 203W	5 gallon kit	1.11	266	30 mils
<b>Top Coat</b>				
Sikagard 203W	5 gallon kit	1.11	266	30 mils
<b>Alternate Top Coat for high gloss finish</b>				
Sikagard 307W	5 gallon kit	0.20	2000	4 mils
Sikagard 307W	5 gallon kit	0.20	2000	4 mils

# Sikafloor Cove Base

## Industrial Cove

Coating	Product Packaging	Approximate Square Foot Coverage per Kit	Recommended Thickness
<b>Primer Coat</b>			
Sikafloor 160	15 gallon kit	14400 linear feet, 4 inches	5 mils
<b>Cove Mortar</b>			
Sikafloor 160	80 ounces Part A/40 ounces Part B	50 linear feet by 4 inches	1/8 inch
Sikadur 506 aggregate	50 pounds		
Sikafloor Extender T	32 - 48 ounces		

## Decorative Cove

Coating	Product Packaging	Approximate Square Foot Coverage per Kit	Recommended Thickness
<b>Primer Coat</b>			
Sikafloor 217	4.5 gallon kit	600 linear feet, 4 inches	8 mils
<b>Cove Mortar</b>			
Sikafloor 217	80 ounces Part A/40 ounces Part B	25 linear feet by 4 inches	1/8 inch
Colored Quartz	50 pounds		
Sikafloor Extender T	32 - 48 ounces		

# Sikafloor Resinous Floor Coatings

	List Price	Coverage/Sq. Ft.	\$/gal.	FOB	Lbs.
Sikafloor 160 - Primer and Binder for Epoxy Mortar 490509 - 15 Gallon Kit (2A+B)	\$1,060.80	3,000 @8 mils	70.72	OH/CA/TX/NJ	155
■ 435227 (Part A) - 5 gallon pail	\$321.30	2,400 @10 mils			54
◇ 490501 (Part B) - 5 gallon pail	\$418.20	560 @3/16" 480@1/4"			47
455131 - 150 Gallon Kit (2A+B)	\$10,154.10	30,000 @8 mils	67.69	OH	1,500
■ 453383 (Part A) - 50 gallon drum	\$3,060.00	24,000 @10 mils			514 x 2
◇ 455069 (Part B) - 50 gallon pail	\$4,034.10	5,600 @3/16" 4,800 @1/4"			472
460362 - 15 Gallon Sikadur 506 Mortar Kit (2A+1B+20C)	\$1,387.20			OH	1,162
(20) 50 lb. bags of aggregate per 15 gal. resin	\$16.32/bag				
474367 - 15 Gallon Sikadur 506 ER Mortar Kit (2A+1B+20C)	\$1,550.40			OH	1,162
(20) 50 lb. bags of aggregate per 15 gal. resin	\$24.48/bag				
<b>Sikafloor 161 - Epoxy Primer, Semi Transparent</b>					
455082 - 4.5 Gallon Kit (A+B)	\$327.42	900 @8 mils	72.76	OH/CA/TX/NJ	55
■ 433284 (Part A) - 3 gallon pail	\$216.24	720 @10 mils			39
◇ 470412 (Part B) - 1.5 gallon pail	\$111.18				16
455081 - 150Gallon Kit (2A+B)	\$9,598.20	30,000 @8 mils	63.99	OH	1,806
■ 453602 (Part A) - 50 gallon drum	\$3,060.00	24,000 @10 mils			670 x 2
◇ 453384 (Part B) - 50 gallon drum	\$3,478.20				466
<b>Sikafloor 1610 - Moisture Tolerant Primer, Red Transparent</b>					
453794 - 4.5 Gallon Kit (A+B)	\$648.72	900 @8 mils	144.16	OH/CA/TX/NJ	55
■ 452775 Part A - 3 gallon pail	\$432.48	720 @10 mils			39
◇ 452776 Part B - 1.5 gallon pail	\$216.24				16
453797 150 Gallon Kit (2A+B)	\$19,507.50	30,000 @8 mils	130.05	OH	1806
■ 452384 Part A - 50 gallon drum	\$6,502.50	24,000 @10 mils			670 x 2 x 3
◇ 452383 Part B - 50 gallon drum	\$6,502.50				466
<b>Sikafloor 165 FS- Fast Setting Epoxy Primer</b>					
537959 - 5.0 Gallon Kit (A+B)	\$456.71	800 - 1,600 @5 - 10 mils	91.34	OH/CA/TX/NJ	52
■ 537751 (Part A) - 3 gallon pail	\$227.21				32
◇ 537752 (Part B) - 2 gallon pail	\$229.50				20

■ Hazmat via Air and Ground

◇ Hazmat via Air Only

	List Price	Coverage/Sq. Ft.	\$/gal.	FOB	Lbs.
<b>Sikafloor 207 - Epoxy Binder/Coating</b> 173218 - 15 Gallon Kit (2A+B)	\$1,052.64	3,000 @8 mils	70.18	OH	150
■ 173230 (Part A) - 5 gallon pails	\$361.08	2,400 @10 mils			51 x 2
◇ 173231 (Part B) - 5 gallon pail	\$330.48				48
<b>Sikafloor 216 - Clear Epoxy</b>					
490530 - 15 Gallon Kit (2A+B)	\$1,139.34	3,000 @8 mils	75.96	OH/CA/TX/NJ	155
■ 490499 (Part A) - 5 gallon pail	\$300.90	2,400 @10 mils			54 x 2
◇ 490500 (Part B) - 5 gallon pail	\$537.54				47
<b>Sikafloor 217 - UV Resistant Epoxy</b>					
529861 - 4.5 Gallon Kit (A+B)	\$369.75	900 @8 mils	82.17	OH/CA/TX/NJ	45
■ 512789 (Part A) - 3 gallon pail	\$213.18				31
◇ 512788 (Part B) - 1.5 gallon pail	\$156.57				14
<b>529859 - 15 Gallon Kit (2A+B)</b>					
■ 521116 (Part A) - 5 gallon pail	\$335.58	2,400 @10 mils	77.28	OH/CA/TX/NJ	54 x 2
◇ 521117 (Part B) - 5 gallon pail	\$488.07				49
<b>529860 - 150 Gallon Kit (2A+B)</b>					
■ 521115 (Part A) - 50 gallon drum	\$3,202.80	24,000 @10 mils	73.98	OH	1,492
◇ 520909 (Part B) - 50 gallon drum	\$4,692.00				462
<b>Sikafloor 217 Thixo Lite</b>					
◇ 531361 (Part B) - 1.5 gallon pail	\$218.79	1,440 @5 mils		OH/CA/TX/NJ	13
◇ 529643 (Part B) - 5 gallon pail	\$666.06	4,800 @5mils		OH/CA/TX/NJ	48
<i>Note: To be used with Sikafloor 217 Part A</i>					
<b>Sikafloor 218 DF - Decorative Floor Epoxy</b>					
536881 - 4.5 Gallon Kit (A+B)	\$390.15	160 @80 mils*	86.70	OH/CA/TX/NJ	45
■ 535506 (Part A) - 3 gallon pail	\$233.58				31
◇ 512788 (Part B) - 1.5 gallon pail	\$156.57	*When combine with aggregate			14
<i>Note: Part B listed above is Sikafloor 217 Part B</i>					
<b>Sikafloor 225N - UV Resistant Clear Epoxy</b>					
496432 - 15 Gallon Kit (2A+B)	\$1,868.64	3,880 @16 mils	124.58	OH/NJ	150
411044 (Part A) - 5 gallon pail	\$590.58				52
411003 (Part B) - 5 gallon pail	\$687.48				46
■ Hazmat via Air and Ground					
◇ Hazmat via Air Only					



# Sikafloor Resinous Floor Coatings

	List Price	Coverage/Sq. Ft.	\$/gal.	FOB	Lbs.
Sikafloor 264 - Pigmented High Performance Epoxy 4.5 Gallon Kit (A+B) - Refer Below	\$383.01	900 @8 mils	85.11	OH/CA/TX/NJ	58
Part A - 3 gallon pail	See Below	720 @10 mils			44
◇ 470412 (Part B) - 1.5 gallon pail	\$111.18	450 @16 mils			14
4.5 Gallon Stocked Color Kit	Part A Color	List Price			
■ 455425 - Silver Gray	453407	\$271.83			
■ 455427 - Light Gray	449687	\$271.83			
■ 456659 - Oxford Gray	445793	\$271.83			
■ 455429 - Window Gray	453408	\$271.83			
■ 455450 - Traffic Gray A	449686	\$271.83			
■ 456680 - Beige Rose	445792	\$271.83			
4.5 Gallon Standard Color Kit See Below for Part A Number	\$386.07		85.79		
■ 455508 - Raffia Beige	453413	\$274.89			
■ 455451 - Beige	453406	\$274.89			
■ 455506 - Tan 251	453416	\$274.89			
■ 455464 - Gray Beige	453405	\$274.89			
■ 455426 - Basalt Gray	453410	\$274.89			
■ 455466 - Traffic Blue	453402	\$274.89			
■ 455468 - Pale Green	453400	\$274.89			
■ 455501 - Signal Yellow	453387	\$274.89			
■ 465666 - Oxide Red	465545	\$274.89			
■ 455500 - Traffic Red	453388	\$274.89			
■ 455503 - Signal White	453386	\$274.89			
■ 499726 - Jet Black	499564	\$274.89			
<i>Standard Colors will ship within 2 -3 business days from receipt of order. Day one begins the day after the order is received. Orders must be received by 4PM EST.</i>					
4.5 Gallon Custom Color Kit See Below for Part A Number	\$416.16				
Custom Color	456613	\$304.98			
150 Gallon Kit (2A+B) - Oxford Gray	\$11,194.50	30,000 @8 mils	74.63	OH	1,838
■ 536187 (Part A) Oxford Gray - 50 gallon drum	\$3,825.00	24,000 @10 mils			686 x 2
◇ 453384 (Part B) - 50 gallon drum	\$3,544.50	15,000 @16 mils			466
150 Gallon Kit (2A+B) Custom Color	\$12,979.50	30,000 @8 mils	86.53	OH	1,838
■ 473064 (Part A) - 50 gallon drum	\$4,717.50	24,000 @10 mils			686 x 2
◇ 453384 (Part B) - 50 gallon drum	\$3,544.50	15,000 @16 mils			466
■ Hazmat via Air and Ground					
◇ Hazmat via Air Only					

	List Price	Coverage/Sq. Ft.	\$/gal.	FOB	Lbs.
<b>Sikafloor 264 Thixo Lite (Part B)</b>					
◇ 455083 264 Thixo Lite Part B - 1.5 gallon pail	\$176.46	900@8 mils	117.64	OH/CA/TX/NJ	14
<i>For Part A refer to Sikafloor 264 and respective color chart</i>					

<b>Sikafloor 265 - Flexible Epoxy Membrane, Clear</b>					
187543 10 Gallon Kit (A+B)	\$1,102.62	800 @20 mils	110.26	OH/CA/TX/NJ	97
187541 Part A - 5 gallon pail	\$490.62				51
◇ 187542 Part B - 5 gallon pail	\$612.00				46

<b>Sikafloor 304W - Matte Clear Water Based Urethane</b>					
508454 - 1.86 Gallon Kit (A+B)	\$332.52	595 @5 mils	178.77	OH/CA/TX/NJ	19
* 498875 (Part A) - 1.5 gallon pail	\$208.08				15
* 498876 (Part B) - 0.35 gallon can	\$124.44				4
<i>Note: Do Not Field Pigment</i>					

<b>Sikafloor 315N Clear Aliphatic Urethane</b>					
516274 - 6 Gallon Kit (2A+2B+2C)	\$1,466.76	2,400 @4 mils	244.46	OH/CA/TX/NJ	63
478199 Part A - (2) 1 gallon can	\$183.60				20
* 478240 Part B - (2) 2 gallon pail	\$606.90				23
540457 Part C - (2) 1 quart can optional wear additive	\$69.36				20
<i>Note: For faster cure times use Sikafloor 372 urethane accelerator found on Page 34</i>					

<b>Sikafloor 315N For Color Pack - Use with SCO Color Pack</b>					
551120 - 6 Gallon Kit (2A+2B+2C)	\$1,457.58	2,400 @4 mils	242.93	OH/CA/TX/NJ	59
505682 Part A - (2) 0.75 gallon can	\$174.42				16
* 478240 Part B - (2) 2 gallon pail	\$606.90				23
540457 Part C - (2) 1 quart can optional wear additive	\$69.36				20
<i>Note: For faster cure times use Sikafloor 372 urethane accelerator found on Page 34</i>					

<b>Sikafloor 330 Flexible Polyurethane Membrane</b>					
429177 - 7.22 Gallon Kit (A+B)	\$506.43	144 @80 mils	70.14	OH/CA/TX/NJ	94
405960 Part A - (2) 2.69 gallon pail	\$163.46				35 x 2
405962 Part B - (2) 1 gallon pail	\$179.52				23

*Note: Use with Sikafloor SEP-N Color Pack. Do Not Use Sikafloor SCO Color Pack. (2) Quarts per 7.22 Gallon Kit Required.*

- Hazmat via Air and Ground
- ◇ Hazmat via Air Only
- \* Protect from Freezing

# Sikafloor Resinous Floor Coatings

	List Price	Coverage/Sq. Ft.	\$/gal.	FOB	Lbs.
Sikafloor 340 Chemical Resistant Aliphatic Urethane 187586 - 5 Gallon Kit (2A+2B)	\$628.32	2,000 @4 mils	125.66	OH/CA/TX/NJ	48
◇ 187583 Part A - 1.5 gallon pail	\$144.84				18.02 x 2
* ◇ 187582 Part B - (2) 1 gallon pail	\$338.64				12
187587 15 Gallon Kit (2A+B)	\$1,648.32	6,0000 @4 mils	109.89	OH/CA/TX/NJ	148
◇ 187584 Part A - 5 gallon pail	\$420.24				48.44 x 2
* ◇ 187585 Part B - 5 gallon pail	\$807.84				51
◇ Sikafloor 372 Urethane Accelerator 536666 - Carton w/(1) quart & (2) syringes	\$50.24			OH/CA/TX/NJ	3.5
Sikafloor 510 Polyaspartic Resin 436225 8.33 Gallon Kit (A+B) - Refer Below	\$1,246.44	885 @15 mils	149.63	OH/CA/TX/NJ	77
436219 Part A - 5 gallon pail	\$735.42				44
* 436220 Part B - 3.33 gallon pail	\$511.02				33
Sikafloor 510 LPL (Long Pot Life) Polyaspartic Resin 436246 - 8.33 Gallon Kit (A+B)	\$1,248.48	885 @15 mils	149.88	OH/CA/TX/NJ	77
402965 Part A - 5 gallon pail	\$740.52				44
* 436245 Part B - 3.33 gallon pail	\$507.96				33
496417 25 Gallon Kit	\$3,692.40	2,666 @15 mils	147.70	OH	247
402965 Part A - 5 gallon pail	\$740.52				47.87 x 3
* 402966 Part B - 5 gallon pail	\$735.42				51.49 x 2
Sikafloor 510N LPL Clear Polyaspartic Resin 525983 - 8.33 Gallon Kit (A+B)	\$1,248.48	888 @15 mils	149.88	OH/CA/TX/NJ	77
513390 Part A - 5 gallon pail	\$740.52				44
* 513391 Part B - 3.33 gallon pail	\$507.96				33
Sikafloor 2570 WB Water Based Epoxy Primer/Sealer 537958 - 5 Gallon Kit (A+B)	\$385.56	1,600 @5 mils	77.11	OH/CA/TX/NJ	77
537469 Part A - 2.5 gallon pail	\$121.38				44
537470 Part B - 2.5 gallon pail	\$264.18				33

■ Hazmat via Air and Ground

◇ Hazmat via Air Only

\* Protect from Freezing

# Sikafloor Polyurethane Cement Flooring

	List Price	Coverage/Sq. Ft.	FOB	Weight (lbs)
Sikafloor 15NA PurCem Accelerator Kit 537000 - Carton w/(1) Quart and (2) syringes	\$100.47		OH/CA/TX/NJ	3.5

Sikafloor 19NA PurCem Heavy Duty Textured See Below for Kit/Color Number (A+B+2C)	\$150.70	31 @1/4"	OH/CA/TX/NJ	97
* Part A - 1 gallon pail	\$48.65	20 @3/8"		9
* 455928 Part B - 0.7 gallon pail	\$53.91			8
* 455927 Part C - 39.66 lb. bag	\$24.07			40 x 2
<i>Note: Mix Full Kits Only</i>				
<i>USE TWO (2) BAGS PER MIX</i>				

Kit Number (A+B+2C)	Part A Color
459090 - Beige	455929
459088 - Oxide Red	455932
459087 - Agate Gray	455933
459085 - Traffic Gray	455930
477707 - Basalt Gray	476039

Sikafloor 20NA PurCem Heavy Duty Rake & Trowel See Below for Kit/Color Number (A+B+2C)	\$150.50	28 @1/4"	OH/CA/TX/NJ	89
* Part A - 1 gallon pail	\$48.65	19 @3/8"		9
* 455928 Part B - 0.7 gallon pail	\$53.91			8
* 462180 Part C - 39.66 lb. bag	\$23.97		Canada	35.7 x 2
<i>Note: Mix Full Kits Only</i>				
<i>USE TWO (2) BAGS PER MIX</i>				

	Part A Color
Beige	455929
Oxide Red	455932
Agate Gray	455933
Traffic Gray	455930
Basalt Gray	476039

- Hazmat via Air and Ground
- ◇ Hazmat via Air Only
- \* Protect from Freezing

Sikafloor 22NA PurCem Medium Duty See Below For Kit/Color Number (A+B+C)	List Price	Coverage/Sq. Ft.	FOB	Weight (lbs)
	\$128.32	37 @160 mils	OH/CA/TX/NJ	61
* Part A - 1 gallon pail	\$48.65	31 @3/16"		9
* 455928 Part B - 0.7 gallon pail	\$53.91	25 @1/4"		8
* 455925 Part C - 43.96 lb. bag	\$25.76			44
<i>Note: Mix Full Kits Only</i>				
Kit Number (A+B+C)	Part A Color			
459042 - Beige	455929			
459045 - Oxide Red	455932			
459046 - Agate Gray	455933			
459048 - Traffic Gray	455930			
477708 - Basalt Gray	476039			

Sikafloor 24NA PurCem Medium Duty, Sel-Leveling See Below For Kit/Color Number (2A+2B+C)	List Price	Coverage/Sq. Ft.	FOB	Weight (lbs)
	\$254.08	107 @80 mils	OH/CA/TX/NJ	61
* Part A - 1 gallon pail	\$48.65	85 @100 mils		9
* 455928 Part B - 0.7 gallon pail	\$53.91	71 @120 mils		8
* 529378 Part C - 43.96 lb. bag	\$48.96			4
<i>Note: Mix Full Kits Only</i>				
Kit Number (A+B+C)	Part A Color			
515790 - Beige	455929			
515791 - Oxide Red	455932			
515679 - Agate Gray	455933			
515678 - Traffic Gray	455930			
515677 - Basalt Gray	476039			

■ Hazmat via Air and Ground

◇ Hazmat via Air Only

\* Protect from Freezing

	List Price	Coverage/Sq. Ft.	FOB	Weight (lbs)
<b>Sikafloor 29NA PurCem Vertical Cove Base</b> See Below For Kit/Color Number (A+B+C)	\$86.19	1/8" Thick & 1" Radius	OH/CA	65
* Part A - 0.5 gallon pail	\$24.99	Height 6" (25 linear feet)		9
* 477958 Part B - 0.35 gallon pail	\$27.54	Height 4" (30 linear feet)		8
* 462184 Part C - 47.92 lb.bag	\$33.66		Canada	48

*Note: Mix Full Kits Only*

Kit Number (A+B+C)	Part A Color
Beige	477957
Oxide Red	477956
Agate Gray	477955
Traffic Gray	477953
Basalt Gray	477952

	List Price	Coverage/Sq. Ft.	FOB	Weight (lbs)
<b>Sikafloor 31NA PurCem Top Coat</b> See Below for Kit/Color Number (A+B+C)	\$145.40	168 @20 mils	OH/CA/TX/NJ	25
* Part A - 1 gallon pail	\$48.65	224 @15 mils		9
* 455928 Part B - 0.7 gallon pail	\$53.91			8
* 455923 Part C - 8.5 lb pail	\$42.84			9

*Note: Mix Full Kits Only*

Kit Number (A+B+C)	Part A Color
502925 -Beige	455929
502923 -Oxide Red	455932
502922 - Agate Gray	455933
502916 - Traffic Gray	455930
502915 - Basalt Gray	476039

- Hazmat via Air and Ground
- ◇ Hazmat via Air Only
- \* Protect from Freezing

# Sikafloor Chemical Resistant Floor Coatings

	List Price	Coverage/Sq. Ft.	\$/gal.	FOB	Lbs.
Sikafloor 700 Novolac Epoxy Binder/Top Coat 187684 - 6 Gallon Kit (2A+2B)	\$800.70	800 @12 mils	133.45	OH/CA/TX/NJ	61
187683 Part A - 5 gallon pail (2 gallon fill)	\$270.30				24.75 x 2
* ◇ 187682 Part B - (2) 1 gallon pail	\$260.10				11

*Note: Clear. For pigmented add 1 quart of color additive.*

Sikagard Duochem 7500 Novolac Coating 461457 - 3 Gallon Kit (A+B) Clear	\$457.47	318 @16 mils	152.49	OH	32
* ◇ 461454 Part A - 3 gallon pail	\$291.72				22
* ◇ 500097 Part B - 1 gallon can	\$165.75				10
Sikagard Duochem 7500 Novolac Coating 468818 - 3 Gallon Kit (A+B) RAL 7046 Gray	\$499.29	318 @16 mils	166.43	OH	33
* ◇ 468817 Part A - 3 gallon pail	\$333.54				23
* ◇ 500097 Part B - 1 gallon can	\$165.75				10

- Hazmat via Air and Ground
- ◇ Hazmat via Air Only
- \* Protect from Freezing

# SikaFloor ESD Floor Coatings

*Note: All Sikafloor ESD products are made to order. 10 business day lead time. No returns. Three month shelf life.*

	List Price	Coverage/Sq. Ft.	\$/gal.	FOB	Lbs.
<b>Sikafloor 200 ESD Coating</b> 421023 3.56 Gallon Kit (A+B+2 ESD Pack)	\$1,037.95	356 @16 mils	314.06	OH	43
◇ 187994 Part A - 2.18 gallon pail	\$815.22				30
418719 Part B - 1 gallon can	\$174.07				10
187996 ESD Pack - (2) 0.5 pint cans	\$48.65				5
ESD Color Pack - (2) 1 pint cans	\$81.09				

*Note: ESD Color Pack required and not included in kit price. See Page 51*

<b>Sikafloor 200C ESD Coating</b> 421173 3.56 Gallon Kit (A+B+2 ESD Pack)	\$1,163.37	356 @16 mils	352.00	OH	44
◇ 187991 Part A - 2.18 gallon pail	\$940.64				31
418719 Part B - 1 gallon can	\$174.07				10
187996 ESD Pack - (2) 0.5 pint cans	\$48.65				5
ESD Color Pack - (2) 1 pint cans	\$81.09				

*Note: ESD Color Pack required and not included in kit price. See Page 51*

<b>Sikafloor 220W ESD Black Primer</b> 436244 - 1.4 Gallon Kit (A+B)	\$224.96	664 @4 mils	160.69	OH	15
* 436230 Part A - 0.26 gallon can	\$82.82				3
* ◇ 436243 Part B - 1.4 gallon can	\$142.14				12

<b>Sikafloor 222W Black Conductive Primer</b> 554555 1.5 Gallon Kit (A+B)	\$237.76	600 @4 mils	158.51	OH	15
* 529083 Part A - 0.27 gallon pail	\$83.23				3
* ◇ 529082 Part B - 1.23 gallon pail	\$154.53				12

- Hazmat via Air and Ground
- ◇ Hazmat via Air Only
- \* Protect from Freezing



*Note: All Sikafloor ESD products are made to order. 10 business day lead time. No returns.*

	List Price	Coverage/Sq. Ft.	\$/gal.	FOB	Lbs.
Sikafloor 270 ESD Coating 4.5 Gallon Kit (A+B)	\$2322.03	450 @16 mils	516.01	OH	54
Se Below for Part A - 3 gallon pail	\$2,050.35				40
◇ 528848 Part B - 1.5 gallon pail	\$271.68				14
	Part A Color Number				
Sparrow Gray	534319				
Richmond Gray	534432				
Steel Gray	534430				
Anthracite Gray	434431				
Blackstone Black	534433				
Smokey Brown	534443				
Cyan Blue	534440				
Teal Green	534289				
Brickyard Red	534288				

60	Sikafloor 340 ESD Aliphatic Urethane Coating 421327 4.63 Gallon Kit (A+B+ 2 ESD Pack+Trowel Aid)	\$1,526.43	1,846 @4 mils	329.68	OH
	◇ 188007 Part A - 1.4 gallon pail	\$433.50			17
	* 418738 Part B - 1 gallon can	\$367.20			11
	◇ 188009 ESD Pack - 1.98 gallon pail	\$698.70			28
	188010 ESD Trowel Aid - (2) 1 pint cans	\$27.03			5
	ESD Color Pack - (2) 1 pint cans	\$81.09			

*Note: ESD Color Pack required. See Page 52*

- Hazmat via Air and Ground
- ◇ Hazmat via Air Only
- \* Protect from Freezing

# Sikagard Wall Systems

	List Price	Coverage/Sq. Ft.	\$/gal.	FOB	Lbs.
<b>Sikagard 215 Descoglas Reinforced Resin</b> 554944 5.25 Gallon Kit (A+B)	\$513.32	1,050 @8 mils	97.77	OH	50
546782 Part A - 3.75 gallon pail	\$368.99				28
◇ 478819 Part B - 1.5 gallon pail	\$144.33				22
<b>Sikagard 203W Steridex Acrylic Resin Coating</b>					
* 184355 5 gallon pail (Single Component)	\$294.78		58.96	OH	59
<b>Sikagard 307W Sterisept Polyurethane Coating</b>					
* 184336 5 gallon pail (Single Component)	\$392.45	2,000 @4 mils	78.49	OH	56
<b>Sikafloor 422 Water Based Aliphatic Polyurethane Coating</b>					
496431 7.6 Gallon Kit (2A+B)	\$883.83	3,040 @4 mils	116.29	OH	72
188014 Part A - 2.8 gallon pail	\$286.62				30 x 2
188013 Part B - (2) 1 gallon can	\$310.59				12
<b>Sikagard Bonding Primer</b>					
432356 1 Gallon Kit (A+B)	\$78.85	321 @6.5 mils		OH	4
184209 Part A - 0.815 gallon can	\$53.35				2
◇ 184212 Part B - 0.195 gallon can	\$25.50				2
<b>Sikagard Duroplast EE Water Based Epoxy Blockfiller</b>					
457161 10 Gallon Kit (A+B)	\$765.00	50 @33 mils	76.50	Canada	128
457160 Part A - 5 gallon pail	\$387.60	80 @20 mils			64
457157 Part B - 5 gallon pail	\$377.40				64

- Hazmat via Air and Ground
- ◇ Hazmat via Air Only
- \* Protect from Freezing

# Sikafloor Color Additives For Select Urethanes & Polyaspartics

Sikafloor SCO Castor Oil Based Color Additive (4) Quarts per Case	List Price	Coverage/Sq. Ft.	FOB	Weight (lbs)
	\$170.85		OH	20

Note: For use with Sikafloor 315N, Sikafloor 510 and Sikafloor 510 LPL

Color	Color Number
Beige Rose	525680
Beige	525679
Raffia Beige	525678
Silver Gray	525677
Basalt Gray	525676
Signal Yellow	525681
Oxford Gray	525675
Traffic Red	525683
Jet Black	525693
Traffic Blue	525691
Signal White	525692
Pale Green	525690
Window Gray	525688
Oxide Red	525689
Light Gray	525687
Traffic Gray	525686
Tan 251	525685
Gray Beige	525684

Custom Color - 540199      \$230.80

- Hazmat via Air and Ground
- ◇ Hazmat via Air Only
- \* Protect from Freezing

# Sikafloor Color Additives For Epoxies

Sikafloor SEP-N Color Additive (4) Quarts per Case	List Price	Coverage/Sq. Ft.	FOB	Weight (lbs)
	\$170.85		OH	23
<b>Color</b>	<b>Color Number</b>			
Beige Rose	524327			
Beige	524328			
Raffia Beige	524323			
Silver Gray	524430			
Basalt Gray	524426			
Signal Yellow	524381			
Oxford Gray	524428			
Traffic Red	524382			
Jet Black	524385			
Traffic Blue	524383			
Signal White	524429			
Pale Green	524127			
Window Gray	524425			
Oxide Red	524380			
Light Gray	524427			
Traffic Gray	524424			
Tan 251	524329			
Gray Beige	524322			
Custom Color - 543163	\$230.80			

Sikafloor 200/340 ESD Color Additive				
◇ (2) Pints per Case	\$81.09		OH	5
<b>Stock Color</b>	<b>Color Number</b>			
Sky Gray	189363			
Light Gray	189361			
Medium Gray	189362			
Dark Gray	189426			
<b>Special Order Color</b>	<b>Color Number</b>		DS/MTO	5
Gray White	444459			
Beige	444944			
Marshall Blue	189427			-
Black	444458			

- Hazmat via Air and Ground
- ◇ Hazmat via Air Only
- \* Protect from Freezing

Sikafloor Metallic Powder 495811 12 Ounce Container	List Price	Coverage/Sq. Ft.	FOB	Weight (lbs)
	\$56.10		DS/MTO	1

Color Name

P1010/Pearl	P1020/Dolphin
P1030/Manatee	P1105/Guava
P1050/Emerald	P1115/Sandbar
P1110/Overcast	P1125/Bamboo
P1120/Palapa	P1135/Driftwood
P1130/Lager	P1145/Rum
P1140/Hammock	P1155/Tiki
P1150/Shipwreck	P1165/Cannon
P1160/Cabana	P1210/Parrot
P1170/Sandal	P1230/Starfish
P1220/Bikini	P1250/Sangria
P1240/Americana	P1320/Mango
P1310/Mandarin	P1340/Ginger
P1330/Coral	P1420/Papaya
P1410/Banana	P1440/Sunset
P1430/Daydream	P1540/Palm
P1510/Margarita	P1560/Kona
P1550/Pier	P1620/Maui
P1610/Caribbean	P1640/Azure
P1630/Curacao	P1710/Reef
P1650/Ocean	P1040/Whale
P1520/Avocado	P1530/Seaweed

- Hazmat via Air and Ground
- ◇ Hazmat via Air Only
- \* Protect from Freezing

# Sikafloor Decorative Flake, Quartz & Aggregate

	List Price	Coverage/Sq. Ft.	FOB	Weight (lbs)
Sikafloor Decorative Flake 404814 - 50 Pound Box	\$239.90		DS/MTO	50

Consult Sikafloor Color Card for blend name. Sample blends can be found on page 51

Sikafloor Decorative Flake 552221 - 55 Pound Box	\$263.93		DS/MTO	55
---	----------	--	--------	----

Consult Sikafloor Color Card for blend name. Sample blends can be found on page 51

Sikafloor Decorative Quartz Aggregate 189077 - 50 Pound Bag	\$41.82		DS/MTO	50
--	---------	--	--------	----

Consult Sikafloor Color Card on page 57 for blend name

Sikafloor Decodur Granite Aggregate See Below - 35 Pound Bag	\$240.06		DS/MTO	35
---	----------	--	--------	----

Stock Color	Color Number
Black	544079
Beach Sand	544077
Light Blue	494767
Contrast	494769
Hierro	494766
Ruby Red	535971
Apple Green	544078
Classic	494768

Consult Sikafloor Color Card on page 55 for blend name

- Hazmat via Air and Ground
- ◇ Hazmat via Air Only
- \* Protect from Freezing

# Sikafloor Aggregate

	List Price	Coverage/Sq. Ft.	FOB	Weight (lbs)
Sikadur-504 for Self Leveling Slurry Systems 402716 - 50 Pound Bag	\$16.32		OH/TX/CA	50
Sikadur-505 for Epoxy Mortar Systems 402714 - 50 Pound Bag	\$16.32		OH/NJ	50
Sikadur-506 for Epoxy Mortar System 402717 - 50 Pound Bag	\$16.32		OH/NJ	50
Sikadur-506ER (Epo-Rok) for Epoxy Mortar System 465673 - 50 Pound Bag	\$24.48		OH/NJ	50
Sikadur-506RC for Epoxy Mortar System 465672 - 50 Pound Bag (30% Recycled Material)	\$22.44		OH	50
Sikadur-507 Fine Broadcast Aggregate 465671 - 50 Pound Bag	\$16.32		OH/CA	50
Sikadur-508 Medium Broadcast Aggregate 465670 - 50 Pound Bag	\$16.32		OH/TX/CA	50
Sikadur-509 Coarse Broadcast Aggregate 465609 - 50 Pound Bag	\$16.32		OH/CA	50
Sikafloor Extender T 431727 - 22 lb. bag	\$255.00		OH/CA/TX/NJ	22

- Hazmat via Air and Ground
- ◇ Hazmat via Air Only
- \* Protect from Freezing

# Sika Repair & Sloping Mortars

	List Price	Coverage/Sq. Ft.	FOB	Weight (lbs)
SikaQuick 1000 Rapid Repair Mortar 91336 - 50 Pound Bag	\$28.05	20 @1/4"	OH/NJ/CA	52

Pallet quantities only. 48 bags per pallet

SikaQuick 2500 Rapid Repair Mortar 187589 50 Pound Bag	\$34.17	20 @1/4"	OH /NJ/CA	52
---	---------	----------	-----------	----

Pallet quantities only. 48 bags per pallet

SikaLevel 125 188051 50 Pound Bag	\$28.05	42 @1/8"	OH/NJ/CA	53
--------------------------------------	---------	----------	----------	----

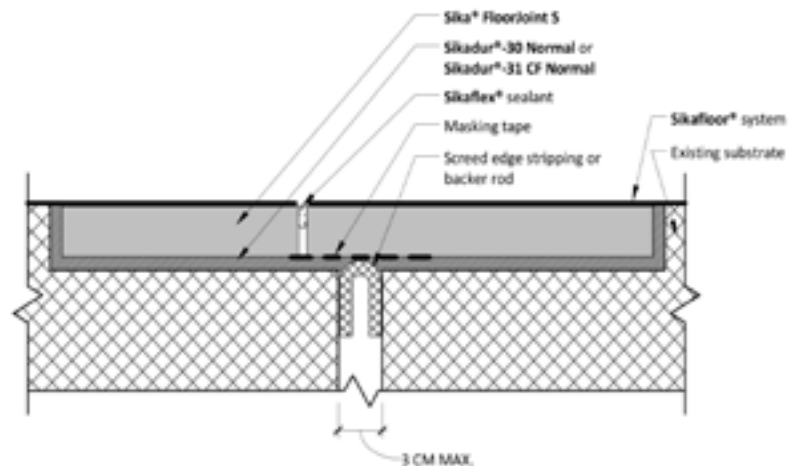
Pallet quantities only. 48 bags per pallet

SikaLevel Primer 01 416956 (4) 1 Gallon Container	\$38.76	325 - 500/gallon	OH/CA/NJ	42
--	---------	------------------	----------	----

# Sika Floorjoint - S

	List Price	Coverage	FOB	Weight (lbs)
Sika Floorjoint-S 471130 3.94 foot x 9.84 inch Segment	\$532.44		OH	23

Sikadur-31 Hi Mod Structural Epoxy Paste Adhesive 402999 1 Gallon Kit (A+B)	\$74.97	231 Cu. In.	OH	16
187607 3 Gallon Kit (A+B)	\$188.62	693 Cu. In.	OH	50



- Hazmat via Air and Ground
- ◇ Hazmat via Air Only
- \* Protect from Freezing



# Sika ComfortFloor Pro Accessories

	List Price	Coverage/Sq. Ft.	\$/gal.	FOB	Lbs.
<b>Sikafloor Comfort Adhesive</b> 429175 - 6.8 Gallon Kit (2A+2B)	\$326.40	576	48.00	OH	95
405963 Part A - (2) 2.76 gallon pail	\$114.24				40 x 2
405964 Part B - (2) 0.64 gallon can	\$48.96				15
<b>Sikafloor Comfort Porefiller</b> 429176 - 7.9 Gallon Kit (2A+2B)	\$381.48	806	48.29	OH	95
405965 Part A - (2) 3.11 gallon pail	\$130.56				38 x 2
405966 Part B - (2) 0.85 gallon can	\$60.18				15
<b>Sikafloor Comfort Regupol 6015H Rubber Mat</b> 429059 - 59In. x 82 ft. roll	\$551.82			OH	260

Note: Full Rolls Only. Ten (10) Day Lead Time.

# Sika Joint Sealants & Repair

	List Price	Coverage/Sq. Ft.	FOB	Weight (lbs)
<b>Sikadur-51 NS Control Joint Sealant</b> 107678 - 3 Gallon Kit (A+B)	\$209.10		OH/CA/NJ	46
<b>Sikadur-51 SL Control Joint Sealant</b> 90568 - 4 Gallon Kit (A+B)	\$209.10		OH/CA/NJ	48
<b>Sika Loadflex 524EZ Gray</b> 511554 - 10 Gallon Kit (A+B) - Gray	\$821.10		OH/CA/NJ	110
511553 Part A - 5 gallon pail	\$410.55			55
511552 Part B - 5 gallon pail	\$410.55			55
<b>Sikafloor 150 Epoxy Patching Paste</b> 414571 - 2 Gallon Kit (A+B)	\$117.30		OH/CA/NJ	29
<b>Sikadur Injection Gel</b> 107732 - 4 Gallon Kit (A+B)	\$246.84		OH/CA/NJ	55

- Hazmat via Air and Ground
- ◇ Hazmat via Air Only
- \* Protect from Freezing

# SIKAFLOOR® STANDARD COLOR GUIDE

SIKAFLOOR 264, SIKAFLOOR SEP-N & SIKAFLOOR SCO  
COLOR ADDITIVES



SILVER GRAY



LIGHT GRAY



OXFORD GRAY



WINDOW GRAY



TRAFFIC GRAY



BEIGE ROSE



GRAY BEIGE



SIGNAL YELLOW



JET BLACK



RAFFIA BEIGE



BEIGE



TAN 251



BASALT GRAY



TRAFFIC BLUE



PALE GREEN



OXIDE RED



TRAFFIC RED



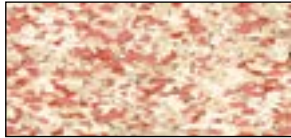
SIGNAL WHITE

Colors show approximate tone without any texture. The color of the actual products may vary. Make final approval from job site mockup. Gloss level will vary depending on product used.

# SIKAFLOOR® DECOFLAKE BLENDS



CAPIZ



NUTMEG



ORGANIC



QUARTZ



SUNBURST



MING RED



BOG



OPAL



HARVEST



CINNABAR



MOSS



HAMPTON



TERRA COTTA



RACEWAY



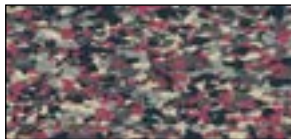
FAIRWAY



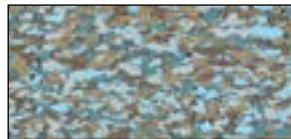
MEDITERRANEAN



SAHARA



RED ROCK



SURFSIDE



BLUEJAY



SMOKE



GLACIER



GRANITE



SAPPHIRE

Colors show approximate tone without any texture. The color of the actual products may vary. Make final approval from job site mockup. Gloss level will vary depending on product used.

# SIKAFLOOR® ESD COLOR GUIDE

Colors for Sikafloor 200 ESD and Sikafloor 340 ESD

## Stocked Colors



Sky Gray



Light Gray

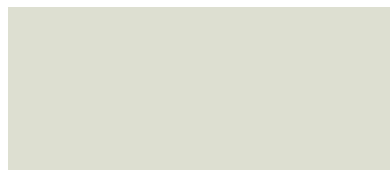


Dark Gray



Medium Gray

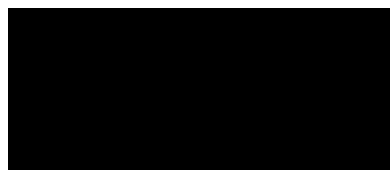
## Special Order Colors



Grey White



Beige

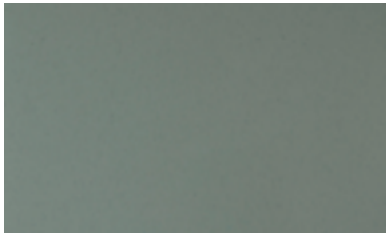


Black

Colors show approximate tone without any texture. The color of the actual products may vary. Make final approval from job site mockup. Gloss level will vary depending on product used.

# SIKAFLOOR® ESD COLOR GUIDE

## Standard Colors for Sikafloor 270 ESD



Sparrow Gray



Richmond Gray



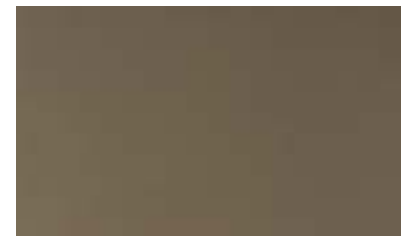
Steel Gray



Anthracite Gray



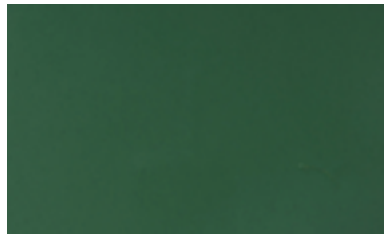
Blackstone Black



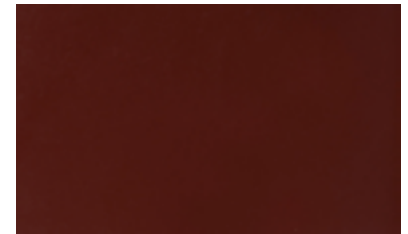
Smokey Brown



Cyan Blue



Tea Green



Brickyard Red

Colors show approximate tone without any texture. The color of the actual products may vary. Make final approval from job site mockup. Gloss level will vary depending on product used.

# SIKAFLOOR® METALLIC FX® COLORS



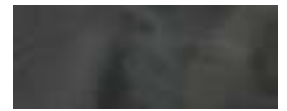
P1010/PEARL



P1020/DOLPHIN



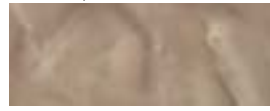
P1030/MANATEE



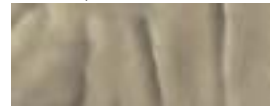
P1040/WHALE



P1050/EMERALD



P1105/GUAVA



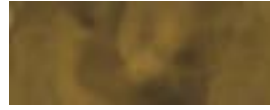
P1110/OVERCAST



P1115/SANDBAR



P1120/PALAPA



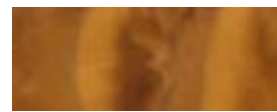
P1125/BAMBOO



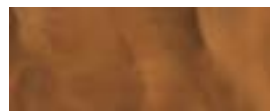
P1130/LAGER



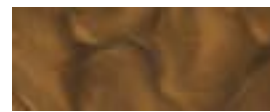
P1135/DRIFTWOOD



P1140/HAMMOCK



P1145/RUM



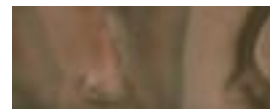
P1150/SHIPWRECK



P1155/TIKI



P1160/CABANA



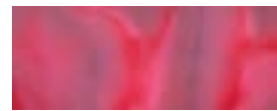
P1165/CANNON



P1170/SANDAL



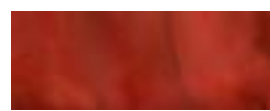
P1210/PARROT



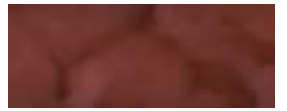
P1220/BIKINI



P1230/STARFISH



P1240/AMERICANA



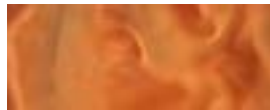
P1250/SANGRIA



P1310/MANDARIN



P1320/MANGO



P1330/CORAL



P1340/GINGER



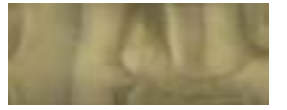
P1410/BANANA



P1420/PAPAYA



P1430/DAYDREAM



P1440/SUNSET



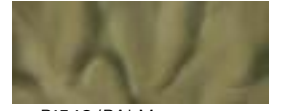
P1510/MARGARITA



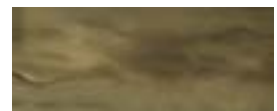
P1520/AVOCADO



P1530/SEAWEED



P1540/PALM



P1550/PIER



P1560/KONA



P1610/CARIBBEAN



P1620/MAUI



P1630/CURACAO



P1640/AZURE



P1650/OCEAN



P1710/REEF

Colors show approximate tone without any texture. The color of the actual products may vary. Make final approval from job site mockup. Gloss level will vary depending on product used.

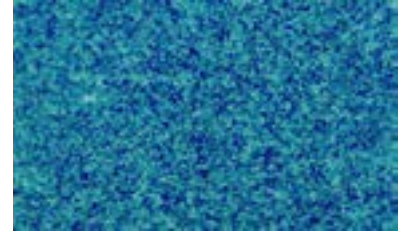
# SIKAFLOOR® DECODUR GRANITE COLOR GUIDE



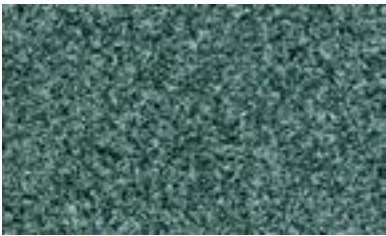
Black



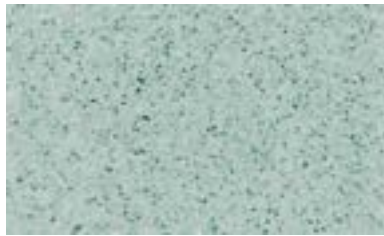
Beach Sand



Light Blue



Contrast



Hierro



Ruby Red



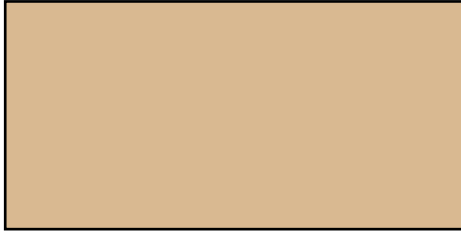
Apple Green



Classic

Colors show approximate tone without any texture. The color of the actual products may vary. Make final approval from job site mockup. Gloss level will vary depending on product used.

# SIKAFLOOR® PURCEM® COLOR GUIDE



RAL 1001 BEIGE



RAL 3009 OXIDE RED



RAL 7038 AGATE GREY



RAL 7042 TRAFFIC GREY



RAL 7012 BASALT GREY

Colors show approximate tone without any texture. The color of the actual products may vary. Make final approval from job site mockup. Gloss level will vary depending on product used.



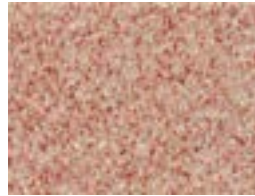
# SIKAFLOOR® QUARTZ BLENDS



SLATE



SALT AND PURPLE



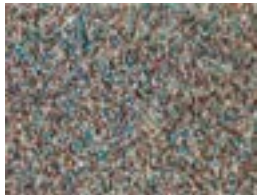
SUMMER PEACH



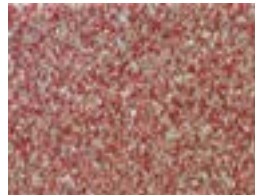
SANDSTONE



GRANITE



TWEED



DESERT SAND



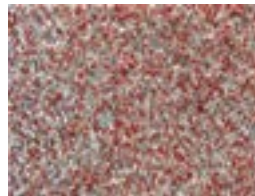
QUICKSAND



VERDIGRIS



OCEAN BLUE



SEDONA RED



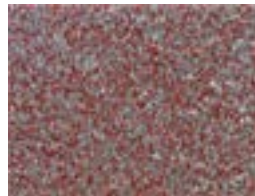
MONTERREY BROWN



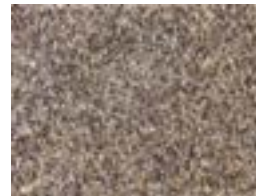
SEAWOOD



COOL WATER



MENDOCINO BURGUNDY



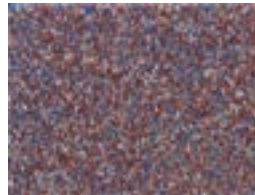
BUCKS COUNTY TAN



EMERALD CITY



GARDEN POOL



LIBERTY PLUM



CANADA BROWN

This reproduction approximates actual colors and patterns.  
Slight variations may be encountered on actual projects.  
Make final approvals from physical sample.

# YOU CAN RUN, DRIVE, SPLASH, CRASH, AND WALK ALL OVER US

We thrive in demanding environments. From thousand-pound steel lifts to razor-sharp operating chisels, we can take on the harshest elements and still look beautiful while doing it. High performance flooring is our specialty, and they don't call us the experts in polyurethane and epoxy chemistry for nothing.

With a full range of floor and wall solutions, we're confident that we can find a system that's right for you. Our flooring systems have been developed for a wide range of markets including transportation, manufacturing, healthcare, education, retail, commercial and administrative. Of course, each of these markets has specific requirements in terms of traffic, chemical resistance, temperature, waterproofing, etc. It sounds complicated but don't worry. We know this stuff inside and out.

With dozens of systems in countless styles, textures and colors, if you can dream it; we can create it. Just tell us what you're looking for. Together we'll find the perfect, high performance flooring system for your unique needs.

## Sika Floor and Wall Products Now Ship In Easy-Open Lever Lock Pails - *New packageing will be phased in over the next year*



- No tools needed
- Open Sika products in 20 seconds
- Reseal lids securely with no leaks
- Keep products fresh for future use

© Copyright 2017 Sika Corporation / 05.1795.5 / 062018



**Sika Corporation • Flooring**  
201 Polito Avenue  
Lyndhurst NJ 07071  
Tel: 844.529.7101  
[www.SikaFloorUSA.com](http://www.SikaFloorUSA.com)

**BUILDING TRUST**

